

Model Name: GA-Q67M-D2H-B3

SHEET

TITLE

01	COVER SHEET
02	BOM & PCB MODIFY HISTORY
03	BLOCK DIAGRAM
04	CPU_LGA1155-A
05	CPU_LGA1155-B
06	CPU_LGA1155-C
07	DDR III CHANNEL A
08	DDR III CHANNEL B
09	PCI EXPRESS*16 SLOT
10	PCH_FDI,DMI,USB,PCIE
11	PCH_DP,CLK BUFFER
12	PCH_HOST,SATA,PCI
13	PCH_GPIO,CTRL,AUDIO
14	PCH_PWR,GND
15	PCH_HDMI,DVI,DP
16	PCI EXPRESS*4 SLOT
17	PCI SLOT
18	INTEL LAN
19	ITE 8728 LPC IO
20	COM,LPT
21	BIOS, TPM
22	VCORE /VAXG PWM_ISL6364A-1
23	VCORE /VAXG PWM_ISL6364A-2
24	DISCRETE POWER I
25	DISCRETE POWER II
26	CPU_VTT ,VCC_SA POWER
27	ATX,RUSB,PROCHOT-

SHEET

TITLE

28	ALC889
29	REAR AUDIO JACK
30	FP,FUSB
31	HWM,KB/MS, FAN CTRL
32	80 PORT,USB UV PROTECT,OV IC
33	
34	
35	
36	

GIGABYTE Technology

Title		
Cover Sheet		
Size	Document Number	Rev
Custom	GA-Q67M-D2H-B3	1.0
Date:	Friday, April 15, 2011	Sheet 1 of 32

Model Name: GA-Q67M-D2H-B3

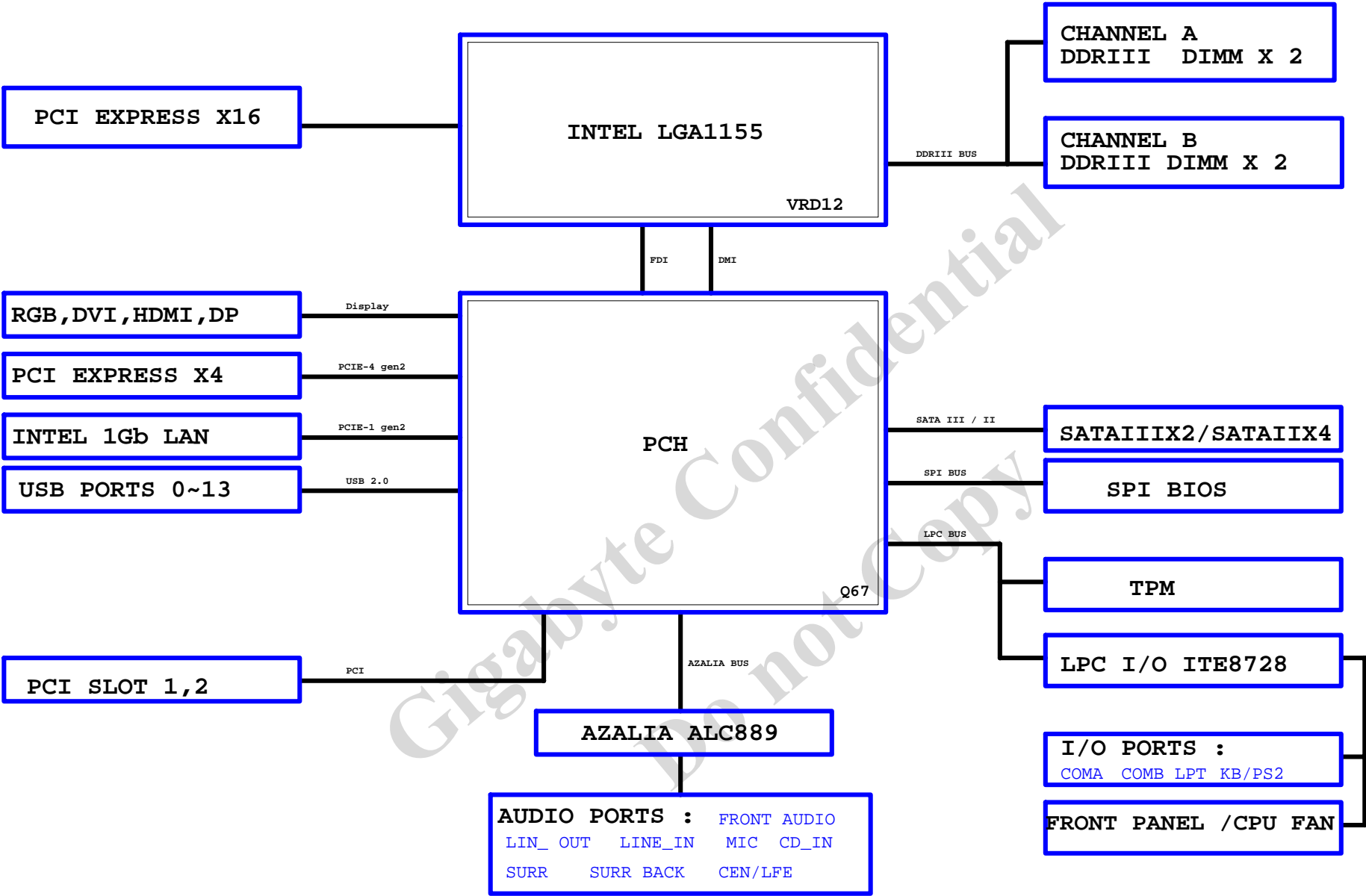
Component value change history

[illegible]

Circuit or PCB layout change

[illegible]

BLOCK DIAGRAM



CPUA

MAAA0	AV27	SA_MA[0]	SA_DQS[0]	AK3	DQSA0
MAAA1	AY24	SA_MA[1]	SA_DQS[0]	AK2	-DQSA0
MAAA2	AW24	SA_MA[2]			
MAAA3	AV23	SA_MA[3]			
MAAA4	AV23	SA_MA[4]	SA_DQ[0]	AJ3	MDA0
MAAA5	AT24	SA_MA[5]	SA_DQ[1]	AJ4	MDA1
MAAA6	AT23	SA_MA[6]	SA_DQ[2]	AL3	MDA2
MAAA7	AU22	SA_MA[7]	SA_DQ[3]	AL4	MDA3
MAAA8	AV22	SA_MA[8]	AJ2	MDA4	
MAAA9	AT22	SA_MA[9]	SA_DQ[5]	AJ1	MDA5
MAAA10	AV28	SA_MA[10]	SA_DQ[6]	AL2	MDA6
MAAA11	AU21	SA_MA[11]	SA_DQ[7]	AL1	MDA7
MAAA12	AT21	SA_MA[12]			
MAAA13	AW32	SA_MA[13]	SA_DQS[1]	AP3	DQSA1
MAAA14	AU20	SA_MA[14]	SA_DQS[1]	AP2	-DQSA1
MAAA15	AT20	SA_MA[15]			
(7) -SWEA	-SCASA	SA_WE#	SA_DQ[8]	AN1	MDA8
(7) -SCASA	-SRASA	SA_CAS#	SA_DQ[9]	AN4	MDA9
(7) -SRASA		SA_RAS#	SA_DQ[10]	AR3	MDA10
(7) SBAA0	SBAA0	SA_BS[0]	SA_DQ[11]	AR4	MDA12
(7) SBAA1	SBAA1	SA_BS[1]	SA_DQ[12]	AN2	MDA11
(7) SBAA2	SBAA2	SA_BS[2]	SA_DQ[13]	AN3	MDA13
			SA_DQ[14]	AR2	MDA14
			SA_DQ[15]	AR1	MDA15
(7) -CSA0	-CSA0	SA_CS#	SA_DQS[2]	AW4	DQSA2
(7) -CSA1	-CSA1	SA_CS#	SA_DQS[2]	AW4	-DQSA2
(7) -CSA2	-CSA2	SA_CS#	SA_DQS[2]		
(7) -CSA3	-CSA3	SA_CS#	SA_DQS[2]		
(7) CKEA0	CKEA0	SA_CKE[0]	SA_DQ[16]	AV2	MDA16
(7) CKEA1	CKEA1	SA_CKE[1]	SA_DQ[17]	AW3	MDA17
(7) CKEA2	CKEA2	SA_CKE[2]	SA_DQ[18]	AV5	MDA18
(7) CKEA3	CKEA3	SA_CKE[3]	SA_DQ[19]	AW5	MDA19
			SA_DQ[20]	AU2	MDA20
			SA_DQ[21]	AU3	MDA21
			SA_DQ[22]	AU5	MDA22
			SA_DQ[23]	AY5	MDA23
			SA_DQS[3]	AV8	DQSA3
			SA_DQS[3]	AW8	-DQSA3
(7) DCLKA0	DCLKA0	SA_CK[0]	SA_DQ[24]	AY7	MDA24
(7) -DCLKA0	-DCLKA0	SA_CK#	SA_DQ[25]	AU7	MDA25
(7) DCLKA1	DCLKA1	SA_CK[1]	SA_DQ[26]	AV9	MDA26
(7) -DCLKA1	-DCLKA1	SA_CK#	SA_DQ[27]	AU9	MDA27
(7) DCLKA2	DCLKA2	SA_CK[2]	SA_DQ[28]	AV7	MDA28
(7) -DCLKA2	-DCLKA2	SA_CK#	SA_DQ[29]	AW7	MDA29
(7) DCLKA3	DCLKA3	SA_CK[3]	SA_DQ[30]	AW9	MDA30
(7) -DCLKA3	-DCLKA3	SA_CK#	SA_DQ[31]	AY9	MDA31
(7,8) -DDR3_RST		SM_DRAMRST#	SA_DQS[4]	AV37	DQSA4
			SA_DQS[4]	AV36	-DQSA4
			SA_DQ[32]	AU35	MDA32
			SA_DQ[33]	AW37	MDA33
			SA_DQ[34]	AU38	MDA34
			SA_DQ[35]	AU36	MDA35
			SA_DQ[36]	AW35	MDA36
			SA_DQ[37]	AY36	MDA37
			SA_DQ[38]	AU38	MDA38
			SA_DQ[39]	AU37	MDA39
			SA_DQS[5]	AP38	DQSA5
			SA_DQS[5]	AP39	-DQSA5
			SA_DQ[40]	AR40	MDA40
			SA_DQ[41]	AR37	MDA41
			SA_DQ[42]	AN38	MDA42
			SA_DQ[43]	AN37	MDA43
			SA_DQ[44]	AR39	MDA44
			SA_DQ[45]	AR38	MDA45
			SA_DQ[46]	AN38	MDA46
			SA_DQ[47]	AN40	MDA47
			SA_DQS[6]	AK38	DQSA6
			SA_DQS[6]	AK39	-DQSA6
			SA_DQ[48]	AL40	MDA48
			SA_DQ[49]	AL37	MDA49
			SA_DQ[50]	AJ38	MDA50
			SA_DQ[51]	AJ37	MDA51
			SA_DQ[52]	AL39	MDA52
			SA_DQ[53]	AL38	MDA53
			SA_DQ[54]	AJ39	MDA54
			SA_DQ[55]	AJ40	MDA55
			SA_DQS[7]	AF38	DQSA7
			SA_DQS[7]	AF39	-DQSA7
			SA_DQ[56]	AG40	MDA56
			SA_DQ[57]	AG37	MDA57
			SA_DQ[58]	AE38	MDA58
			SA_DQ[59]	AE37	MDA59
			SA_DQ[60]	AG39	MDA60
			SA_DQ[61]	AG38	MDA61
			SA_DQ[62]	AE39	MDA62
			SA_DQ[63]	AE40	MDA63

DDR_0

1 OF 10

LGA1155[F01SC1-F01155-01R]

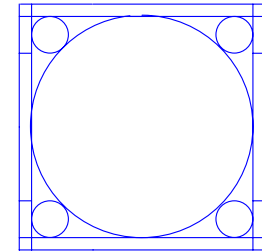
CPUB

MAAB0	AK24	SB_MA[0]	SB_DQS[0]	AH7	DQSB0
MAAB1	AM20	SB_MA[1]	SB_DQS[0]	AH6	-DQSB0
MAAB2	AM19	SB_MA[2]			
MAAB3	AK18	SB_MA[3]			
MAAB4	AP19	SB_MA[4]	SB_DQ[0]	AG7	MDB0
MAAB5	AP18	SB_MA[5]	SB_DQ[1]	AG8	MDB1
MAAB6	AM18	SB_MA[6]	SB_DQ[2]	AJ9	MDB2
MAAB7	AL18	SB_MA[7]	SB_DQ[3]	AJ8	MDB3
MAAB8	AY17	SB_MA[8]	SB_DQ[4]	AG5	MDB4
MAAB9	AN18	SB_MA[9]	SB_DQ[5]	AG6	MDB5
MAAB10	AN23	SB_MA[10]	SB_DQ[6]	AJ6	MDB6
MAAB11	AU17	SB_MA[11]	SB_DQ[7]	AJ7	MDB7
MAAB12	AT18	SB_MA[12]			
MAAB13	AR26	SB_MA[13]	SB_DQS[1]	AM8	DQSB1
MAAB14	AY16	SB_MA[14]	SB_DQS[1]	AL8	-DQSB1
MAAB15	AV16	SB_MA[15]			
(8) -SWEB	-SWEA	SB_WE#	SB_DQ[8]	AL7	MDB8
(8) -SCASB	-SCASB	SB_CAS#	SB_DQ[9]	AM7	MDB9
(8) -SRASB	-SRASB	SB_RAS#	SB_DQ[10]	AM10	MDB10
(8) SBAB0	SBAB0	SB_BS[0]	SB_DQ[11]	AL6	MDB12
(8) SBAB1	SBAB1	SB_BS[1]	SB_DQ[12]	AL6	MDB13
(8) SBAB2	SBAB2	SB_BS[2]	SB_DQ[13]	AL9	MDB14
			SB_DQ[14]	AM9	MDB15
			SB_DQ[15]		
(8) -CSB0	-CSB0	SB_CS#	SB_DQS[2]	AR8	DQSB2
(8) -CSB1	-CSB1	SB_CS#	SB_DQS[2]	AP8	-DQSB2
(8) -CSB2	-CSB2	SB_CS#	SB_DQS[2]		
(8) -CSB3	-CSB3	SB_CS#	SB_DQS[2]		
(8) CKEB0	CKEB0	SB_CKE[0]	SB_DQ[16]	AF7	MDB16
(8) CKEB1	CKEB1	SB_CKE[1]	SB_DQ[17]	AR7	MDB17
(8) CKEB2	CKEB2	SB_CKE[2]	SB_DQ[18]	AP10	MDB18
(8) CKEB3	CKEB3	SB_CKE[3]	SB_DQ[19]	AR10	MDB19
			SB_DQ[20]	AP6	MDB20
			SB_DQ[21]	AR6	MDB21
			SB_DQ[22]	AP9	MDB22
			SB_DQ[23]	AR9	MDB23
			SB_DQS[3]	AN13	DQSB3
			SB_DQS[3]	AN12	-DQSB3
(8) DCLKB0	DCLKB0	SB_CK[0]	SB_DQ[24]	AM12	MDB24
(8) -DCLKB0	-DCLKB0	SB_CK#	SB_DQ[25]	AM13	MDB25
(8) DCLKB1	DCLKB1	SB_CK[1]	SB_DQ[26]	AR13	MDB26
(8) -DCLKB1	-DCLKB1	SB_CK#	SB_DQ[27]	AP13	MDB27
(8) DCLKB2	DCLKB2	SB_CK[2]	SB_DQ[28]	AL12	MDB28
(8) -DCLKB2	-DCLKB2	SB_CK#	SB_DQ[29]	AL13	MDB29
(8) DCLKB3	DCLKB3	SB_CK[3]	SB_DQ[30]	AR12	MDB30
(8) -DCLKB3	-DCLKB3	SB_CK#	SB_DQ[31]	AP12	MDB31
			SB_DQS[4]	AN29	DQSB4
			SB_DQS[4]	AN28	-DQSB4
(8) VREF_DQB	AH1	FC_AH1			
(7) VREF_DQA	AH4	FC_AH4			
			SB_DQ[32]	AR28	MDB32
			SB_DQ[33]	AR29	MDB33
			SB_DQ[34]	AL28	MDB34
			SB_DQ[35]	AL29	MDB35
			SB_DQ[36]	AP28	MDB36
			SB_DQ[37]	AP29	MDB37
			SB_DQ[38]	AM28	MDB38
			SB_DQ[39]	AM29	MDB39
			SB_DQS[5]	AP33	DQSB5
			SB_DQS[5]	AR33	-DQSB5
			SB_DQ[40]	AP32	MDB40
			SB_DQ[41]	AP31	MDB41
			SB_DQ[42]	AP35	MDB42
			SB_DQ[43]	AP34	MDB43
			SB_DQ[44]	AR32	MDB44
			SB_DQ[45]	AR31	MDB45
			SB_DQ[46]	AR35	MDB46
			SB_DQ[47]	AR34	MDB47
			SB_DQS[6]	AL33	DQSB6
			SB_DQS[6]	AM33	-DQSB6
			SB_DQ[48]	AM32	MDB48
			SB_DQ[49]	AM31	MDB49
			SB_DQ[50]	AL35	MDB50
			SB_DQ[51]	AL32	MDB51
			SB_DQ[52]	AM34	MDB52
			SB_DQ[53]	AL31	MDB53
			SB_DQ[54]	AM35	MDB54
			SB_DQ[55]	AL34	MDB55
			SB_DQS[7]	AG35	DQSB7
			SB_DQS[7]	AG34	-DQSB7
			SB_DQ[56]	AH35	MDB56
			SB_DQ[57]	AH34	MDB57
			SB_DQ[58]	AE34	MDB58
			SB_DQ[59]	AE35	MDB59
			SB_DQ[60]	AJ35	MDB60
			SB_DQ[61]	AJ34	MDB61
			SB_DQ[62]	AF33	MDB62
			SB_DQ[63]	AF35	MDB63

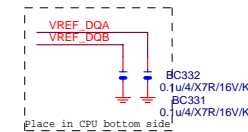
DDR_1

2 OF 10

LGA1155[F01SC1-F01155-01R]

CPU
ILM_BP/1156/CSP

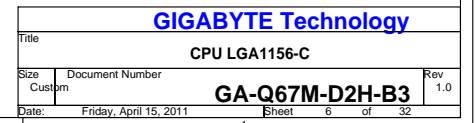
Need check the new CPU ME

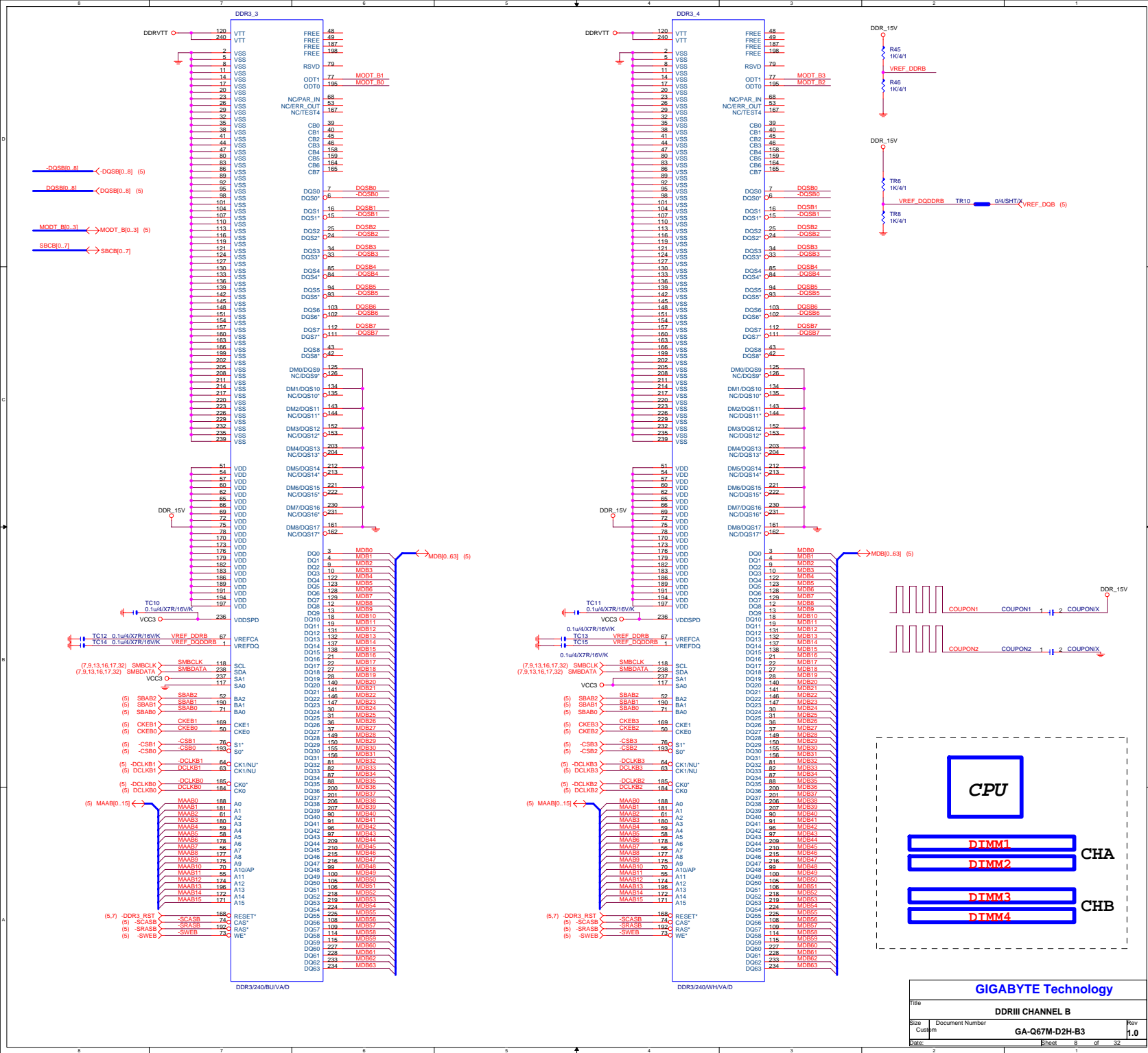


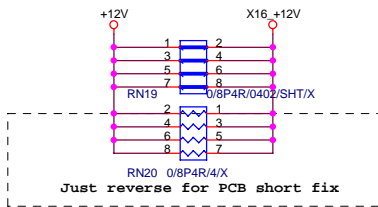
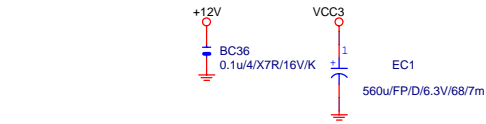
GIGABYTE Technology

CPU LGA1156-B

Title	Document Number	Rev
Size	Custom	1.0
Date:	Friday, April 15, 2011	Sheet 5 of 32



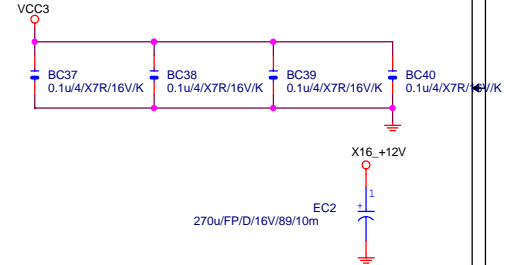
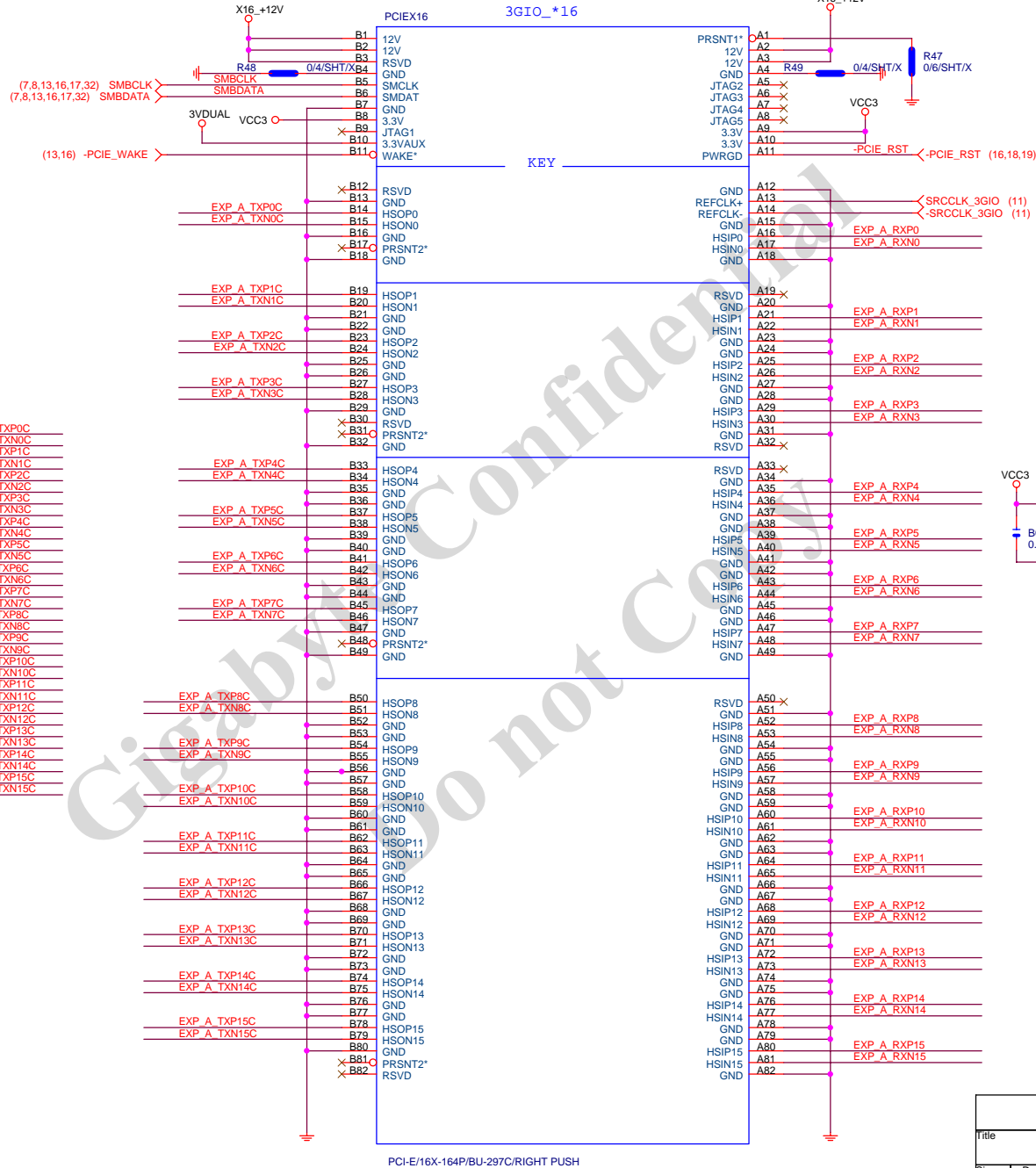


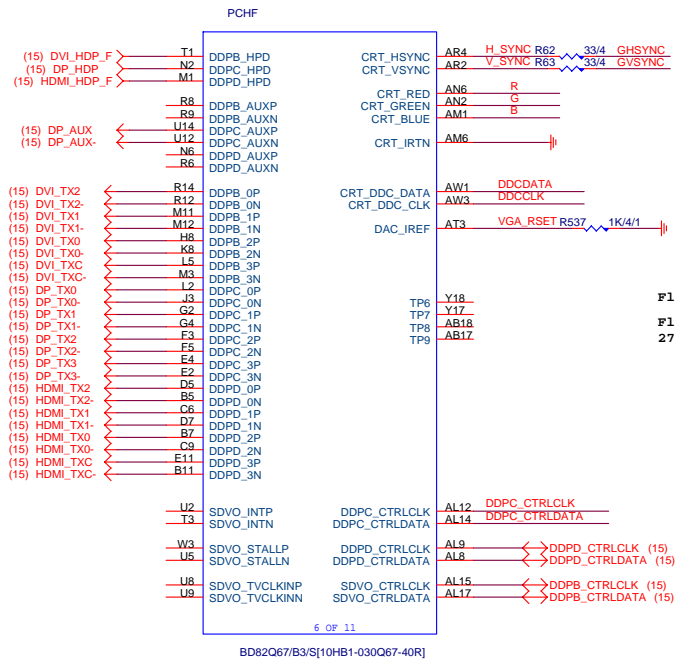


EXP A RXP0[0..15] >>> EXP_A_RXP0[0..15] (4)
EXP A RXN0[0..15] >>> EXP_A_RXN0[0..15] (4)

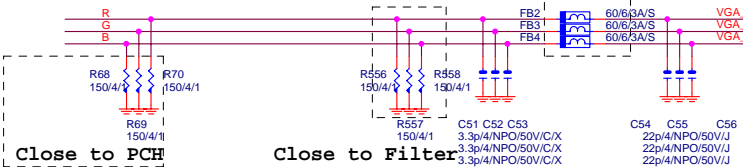
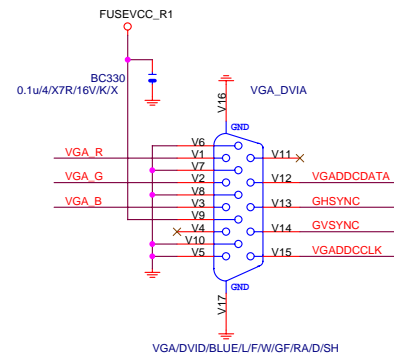
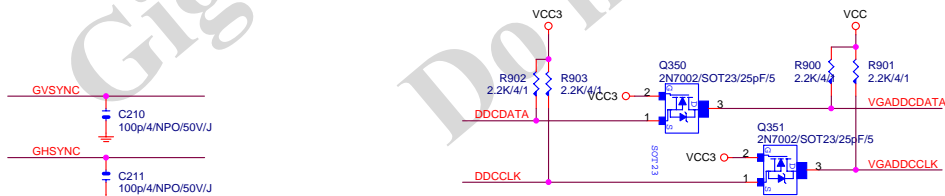
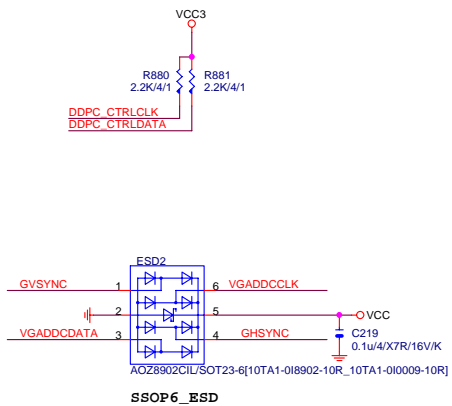
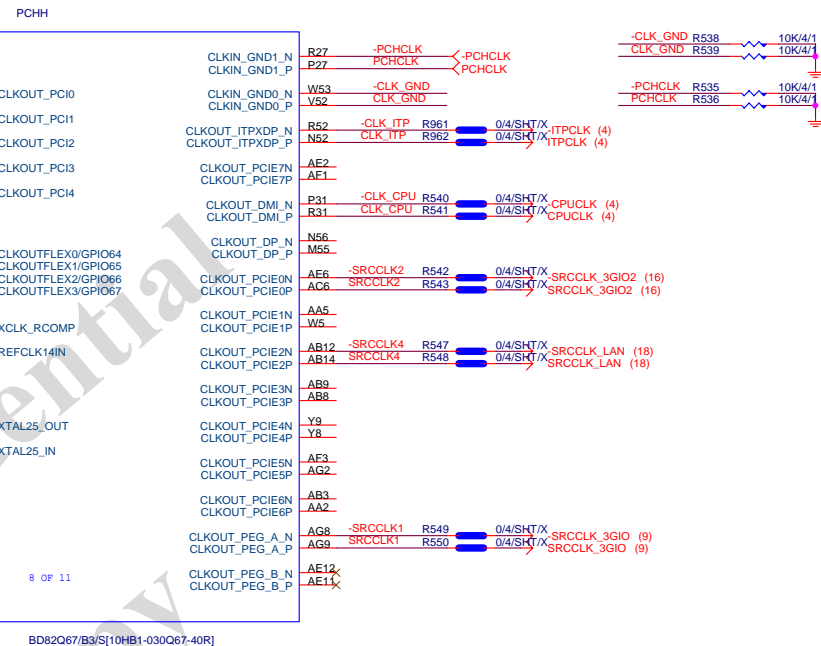
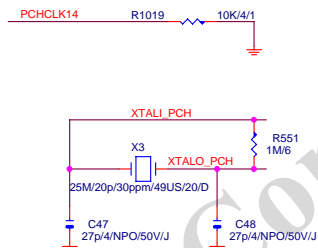
EXP A TXP0[0..15] >>> EXP_A_TXP0[0..15] (4)
EXP A TXN0[0..15] >>> EXP_A_TXN0[0..15] (4)

EXP A TXP0	C2	0.22u4/X5R/6.3V/K	EXP A TXP0C
EXP A TXN0	C3	0.22u4/X5R/6.3V/K	EXP A TXN0C
EXP A TXP1	C4	0.22u4/X5R/6.3V/K	EXP A TXP1C
EXP A TXN1	C5	0.22u4/X5R/6.3V/K	EXP A TXN1C
EXP A TXP2	C6	0.22u4/X5R/6.3V/K	EXP A TXP2C
EXP A TXN2	C7	0.22u4/X5R/6.3V/K	EXP A TXN2C
EXP A TXP3	C8	0.22u4/X5R/6.3V/K	EXP A TXP3C
EXP A TXN3	C9	0.22u4/X5R/6.3V/K	EXP A TXN3C
EXP A TXP4	C10	0.22u4/X5R/6.3V/K	EXP A TXP4C
EXP A TXN4	C11	0.22u4/X5R/6.3V/K	EXP A TXN4C
EXP A TXP5	C12	0.22u4/X5R/6.3V/K	EXP A TXP5C
EXP A TXN5	C13	0.22u4/X5R/6.3V/K	EXP A TXN5C
EXP A TXP6	C14	0.22u4/X5R/6.3V/K	EXP A TXP6C
EXP A TXN6	C15	0.22u4/X5R/6.3V/K	EXP A TXN6C
EXP A TXP7	C16	0.22u4/X5R/6.3V/K	EXP A TXP7C
EXP A TXN7	C17	0.22u4/X5R/6.3V/K	EXP A TXN7C
EXP A TXP8	C18	0.22u4/X5R/6.3V/K	EXP A TXP8C
EXP A TXN8	C19	0.22u4/X5R/6.3V/K	EXP A TXN8C
EXP A TXP9	C20	0.22u4/X5R/6.3V/K	EXP A TXP9C
EXP A TXN9	C21	0.22u4/X5R/6.3V/K	EXP A TXN9C
EXP A TXP10	C22	0.22u4/X5R/6.3V/K	EXP A TXP10C
EXP A TXN10	C23	0.22u4/X5R/6.3V/K	EXP A TXN10C
EXP A TXP11	C24	0.22u4/X5R/6.3V/K	EXP A TXP11C
EXP A TXN11	C25	0.22u4/X5R/6.3V/K	EXP A TXN11C
EXP A TXP12	C26	0.22u4/X5R/6.3V/K	EXP A TXP12C
EXP A TXN12	C27	0.22u4/X5R/6.3V/K	EXP A TXN12C
EXP A TXP13	C28	0.22u4/X5R/6.3V/K	EXP A TXP13C
EXP A TXN13	C29	0.22u4/X5R/6.3V/K	EXP A TXN13C
EXP A TXP14	C30	0.22u4/X5R/6.3V/K	EXP A TXP14C
EXP A TXN14	C31	0.22u4/X5R/6.3V/K	EXP A TXN14C
EXP A TXP15	C32	0.22u4/X5R/6.3V/K	EXP A TXP15C
EXP A TXN15	C33	0.22u4/X5R/6.3V/K	EXP A TXN15C

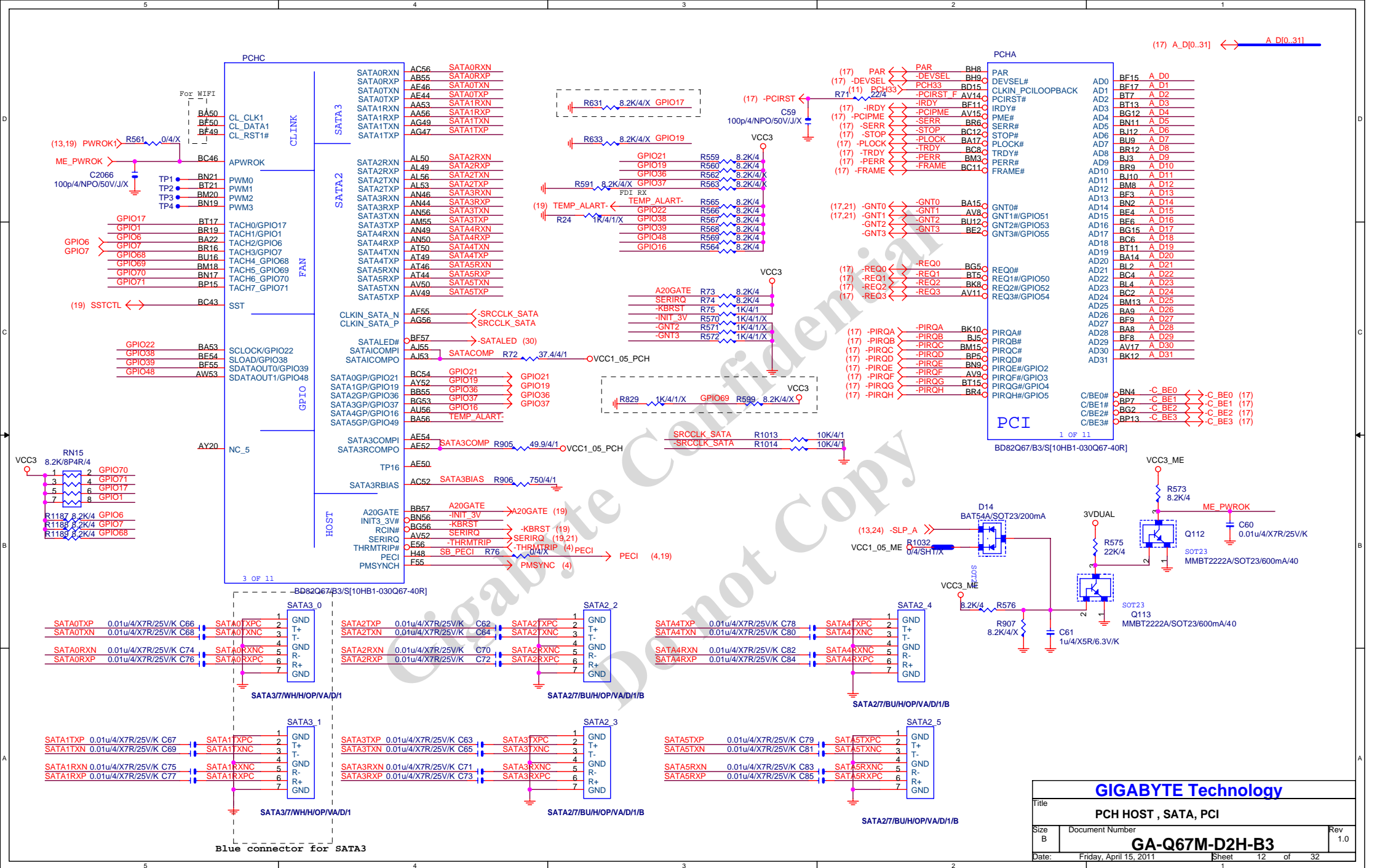


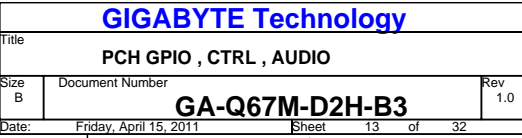


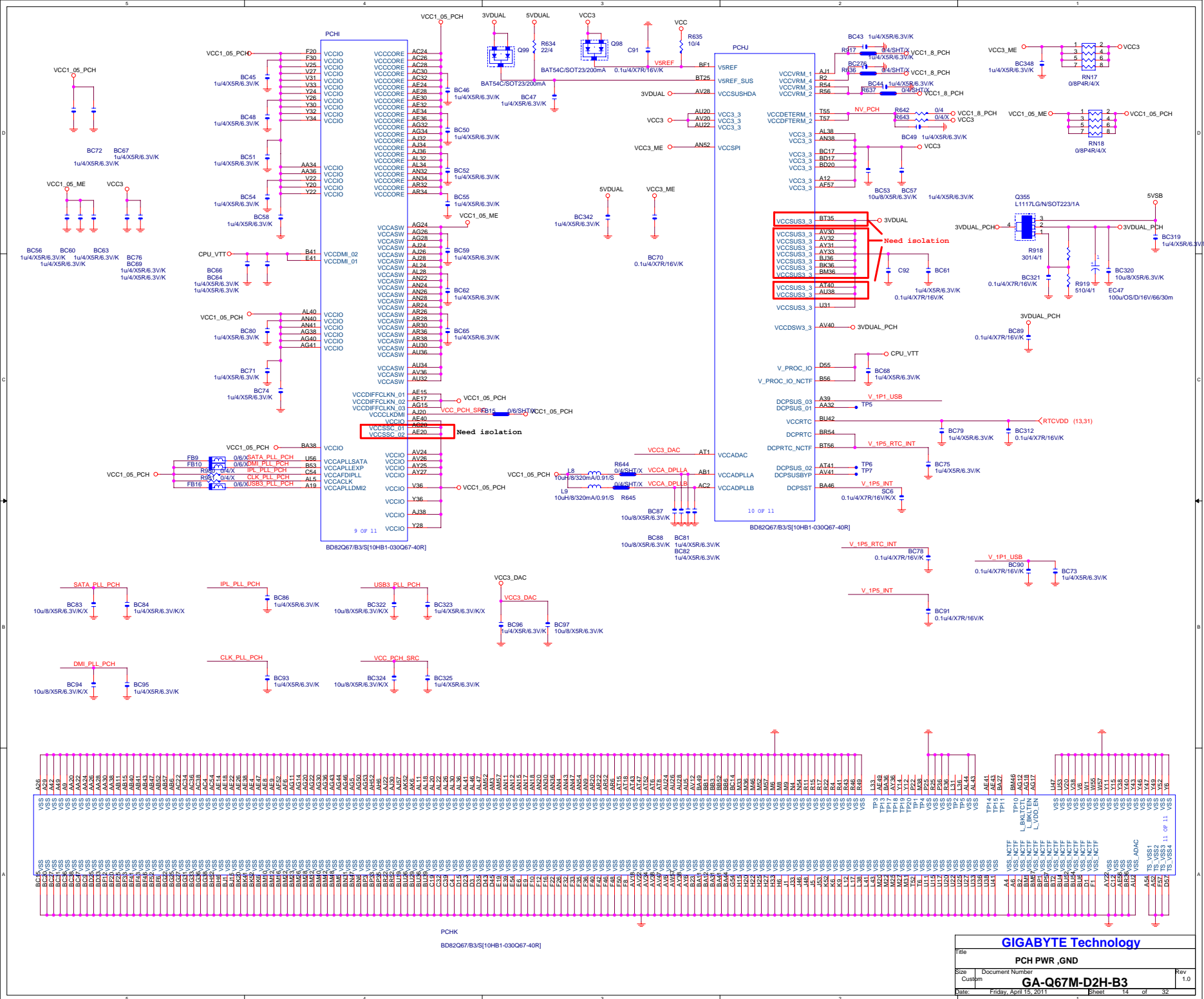
Flex0,2 : 33MHZ
Flex1,3 :
27/14/24/48/25MHZ

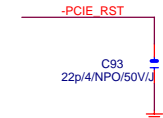
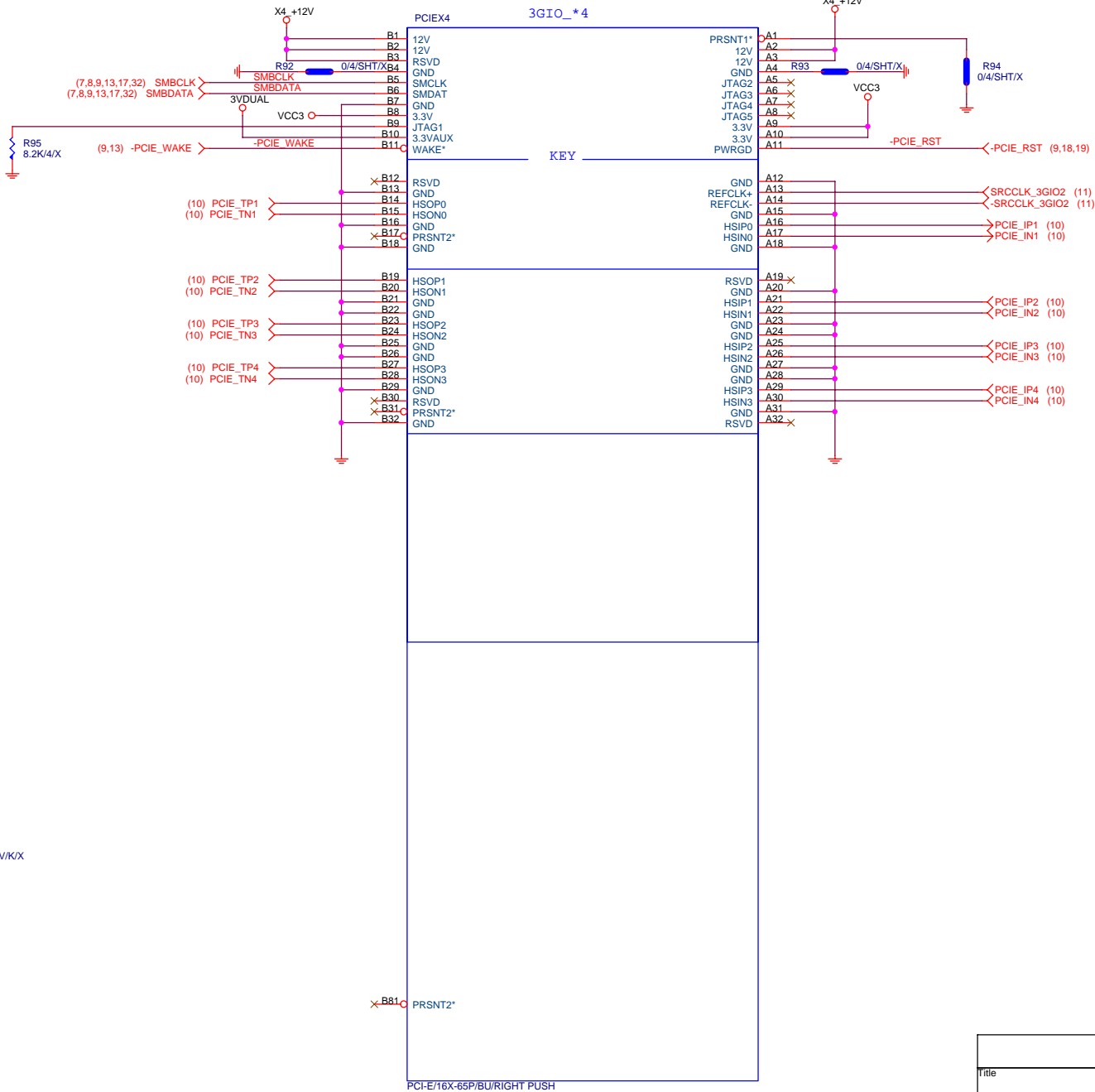
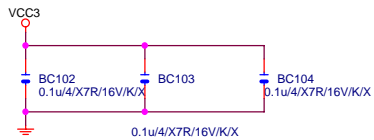
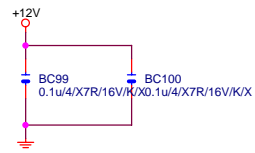
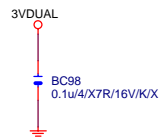
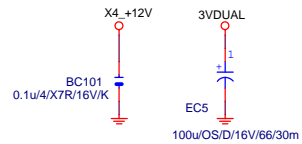
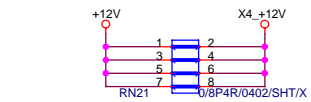


GIGABYTE Technology			
PCH DISPLAY ,CLK BUFFER			
Title	Document Number	Rev	
Size	Custom	1.0	
Date:	Friday, April 15, 2011	Sheet	11 of 32









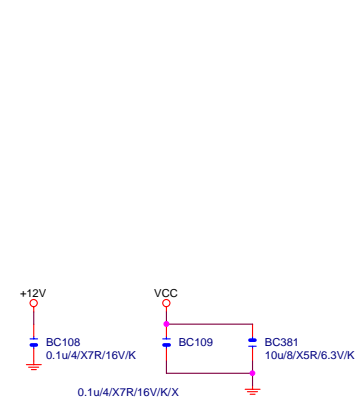
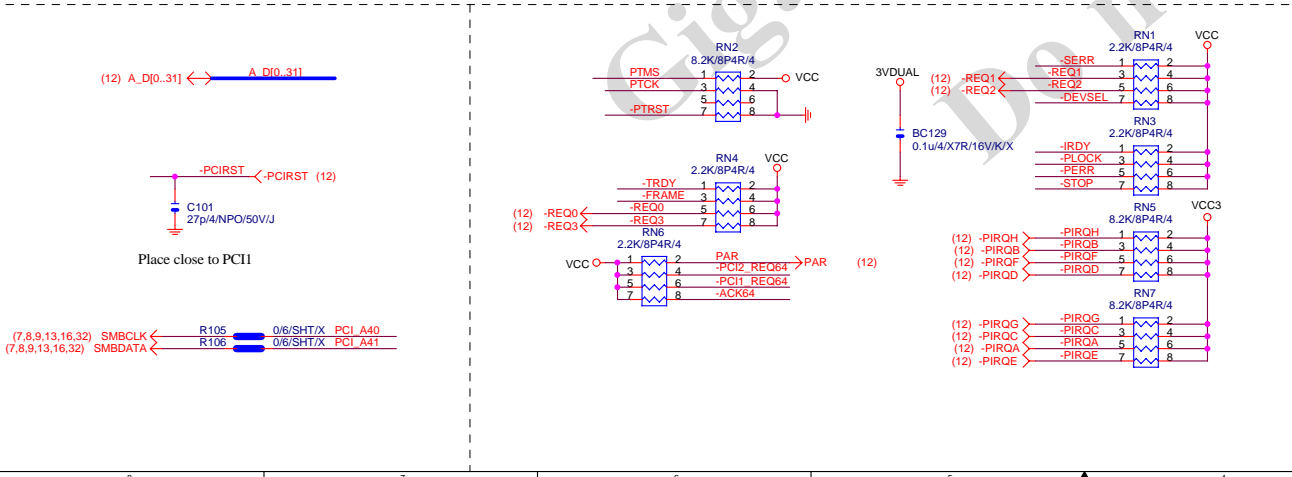
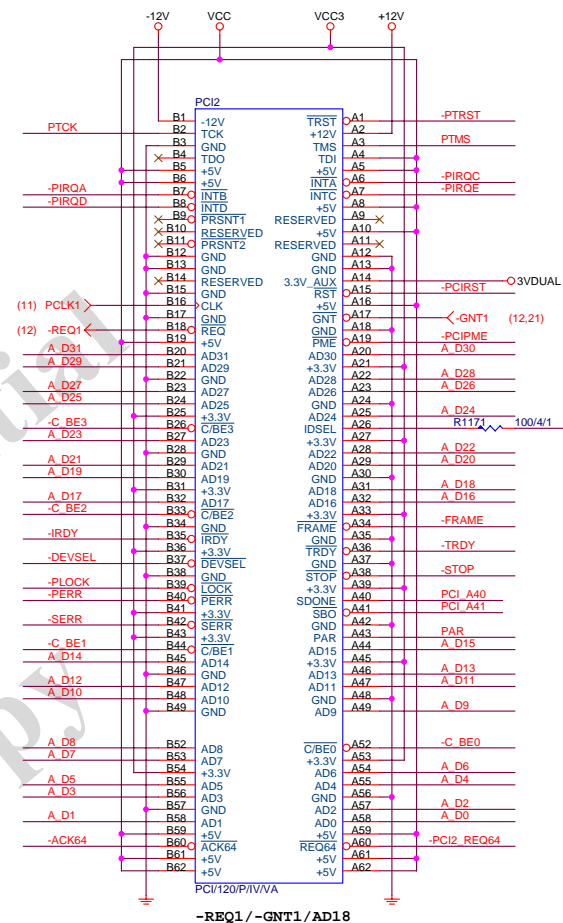
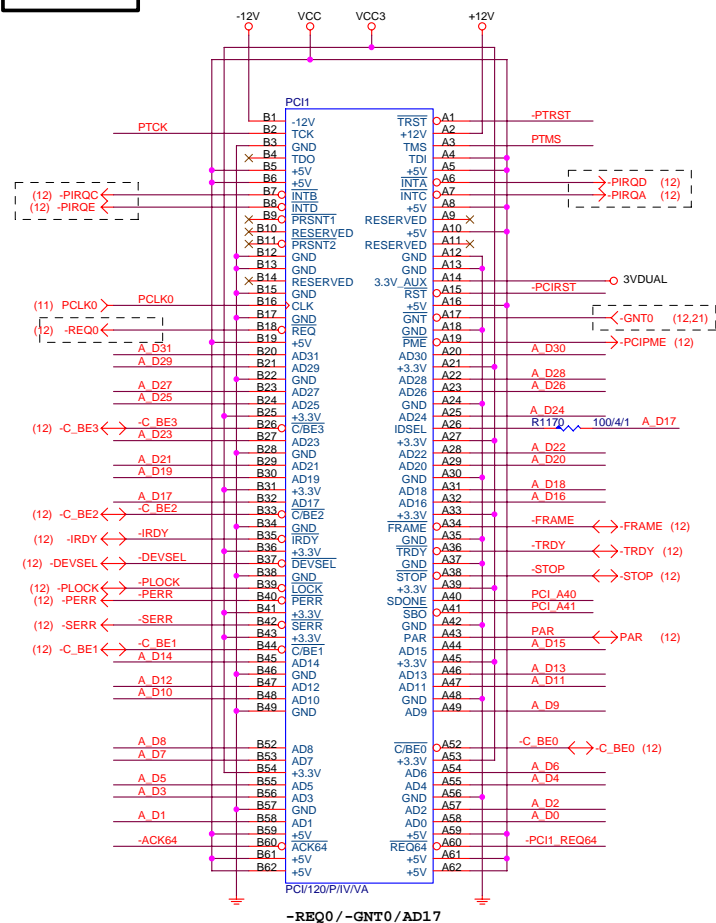
×B81 PRSNT2*

PCI-E/16X-65P/BU/RIGHT PUSH

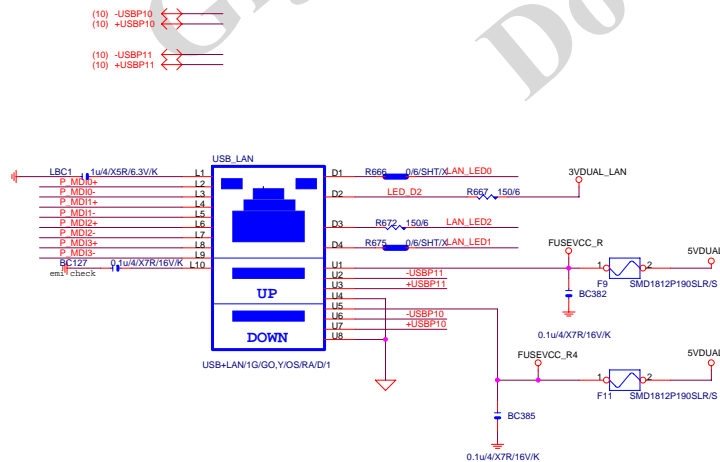
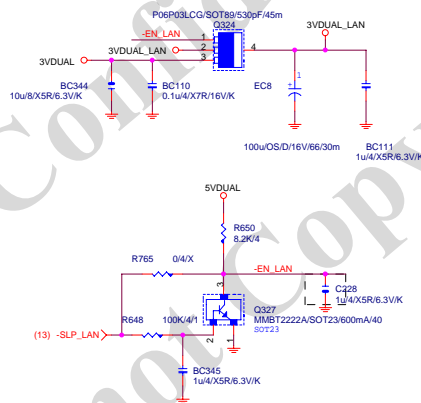
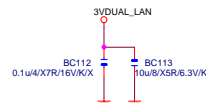
GIGABYTE Technology

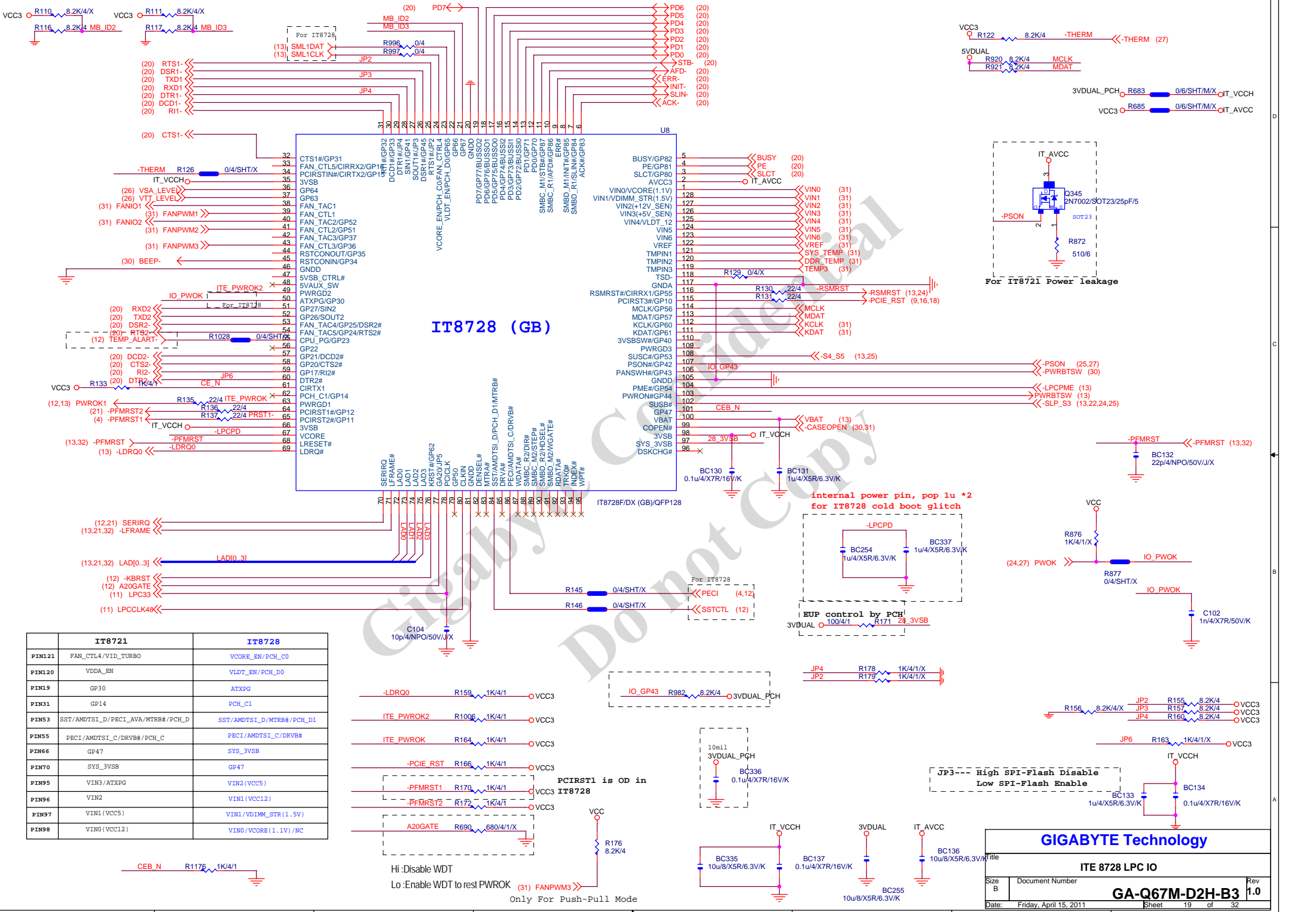
Title			PCI EXPRESS X 4 PORT
Size	Document Number	Rev	1.0
Custom	GA-Q67M-D2H-B3		
Date:	Friday, April 15, 2011	Sheet	16 of 32

PCI SLOT



GIGABYTE Technology			
Title			
PCIEX1,PCI SLOT			
Size			
Custom			
Document Number			
GA-Q67M-D2H-B3			
Rev			
1.0			
Date			
Friday, April 15, 2011			
Sheet			
17 of 32			





	IT8721	IT8728
PIN121	FAN_CTL4/VID_TURBO	VCORE_EN/PCH_C0
PIN120	VDDA_EN	VLDT_EN/PCH_D0
PIN19	GP30	ATXPG
PIN31	GP14	PCH_C1
PIN53	SST/AMDTSI_D/PECI_AVA/MTRB#/PCH_D	SST/AMDTSI_D/MTRB#/PCH_D1
PIN55	PECI/AMDTSI_C/DRVB#/PCH_C	PECI/AMDTSI_C/DRVB#
PIN66	GP47	SYS_3VSB
PIN70	SYS_3VSB	GP47
PIN95	VIN3/ATXPG	VIN2(VCC5)
PIN96	VIN2	VIN1(VCC12)
PIN97	VIN1(VCC5)	VIN1/VDIMM_STR(1.5V)
PIN98	VIN0(VCC12)	VIN0/VCORE(1.1V)/NC

GIGABYTE Technology

ITE 8728 LPC IO

Size B | Document Number | Rev 1.0

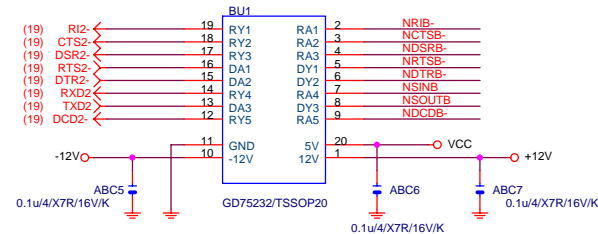
GA-Q67M-D2H-B3

19 of 32

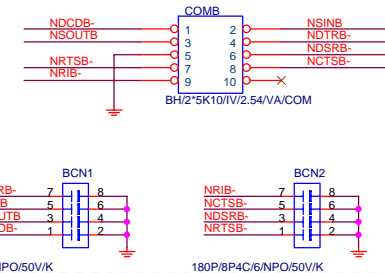
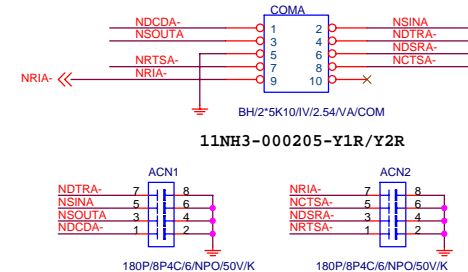
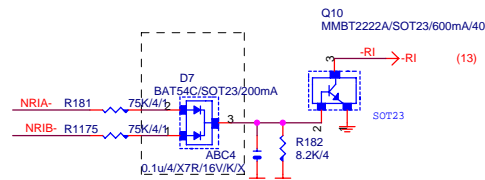
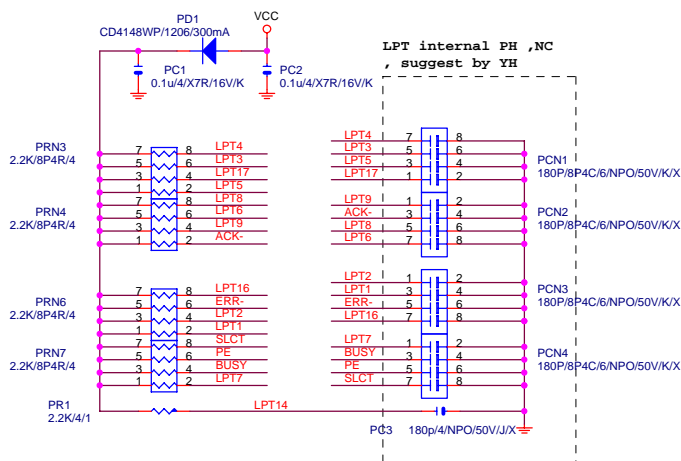
Friday, April 15, 2011

Sheet 19 of 32

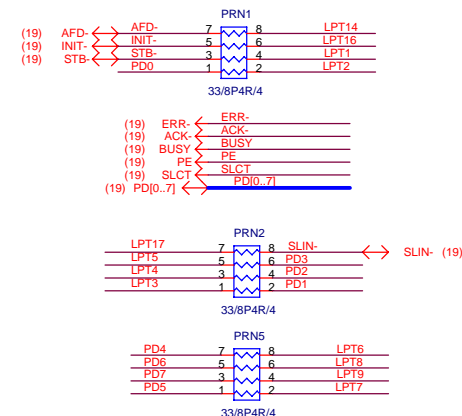
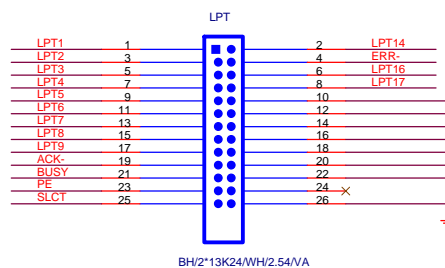
COMB

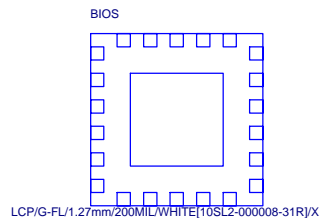
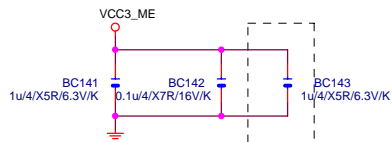


LPT PORT



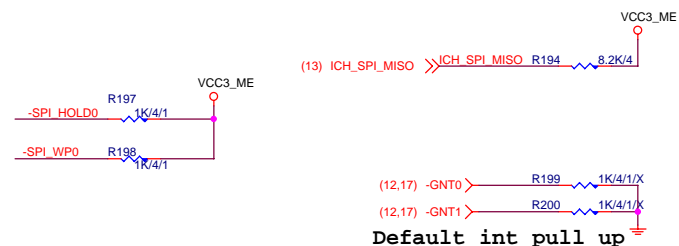
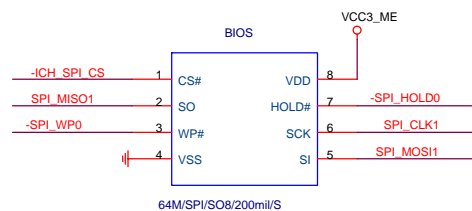
PLACE NEAR COM CONNECTOR



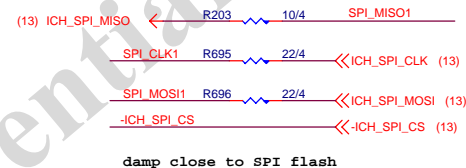


BOOT DEVICE	GNT1	GP19
LPC	0	0
PCI	1	0
SPI	1	1

1 means floating
0 means PD 1K

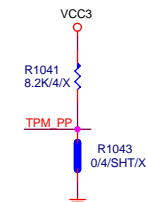
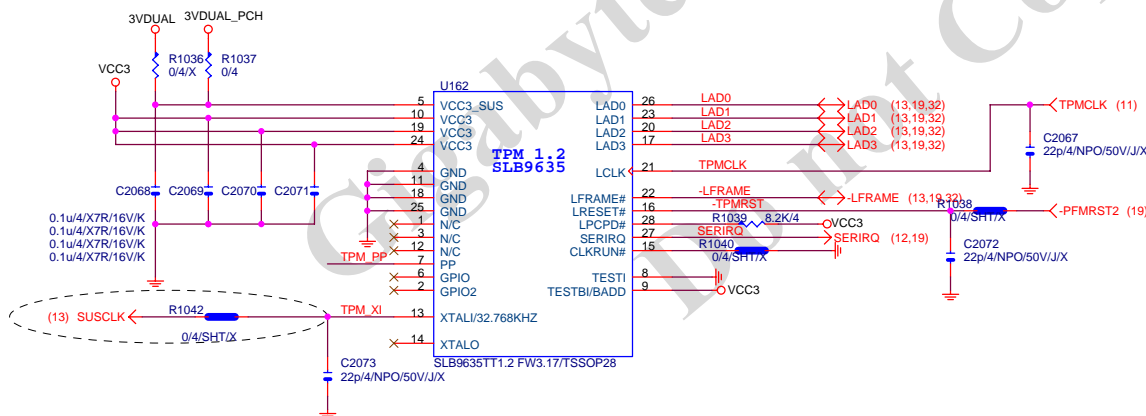


Default int pull up



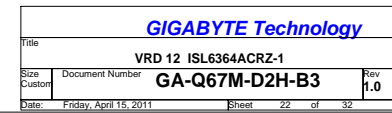
damp close to SPI flash

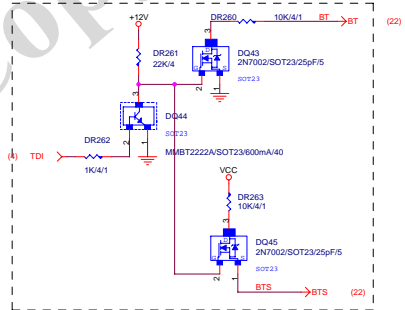
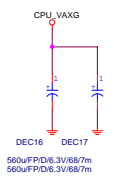
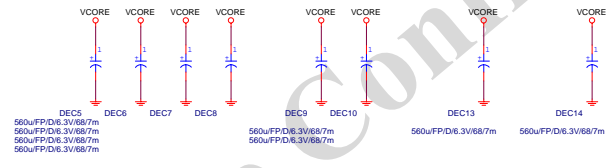
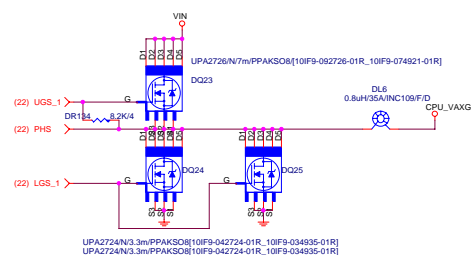
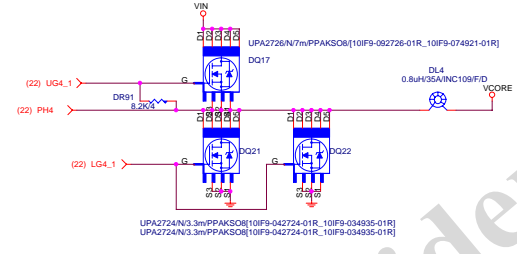
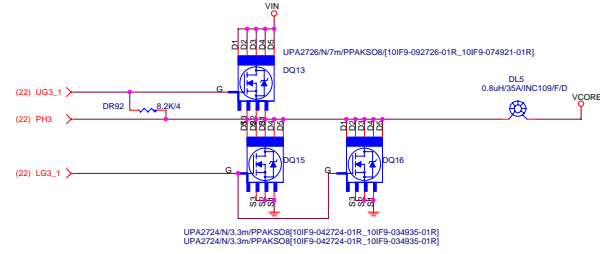
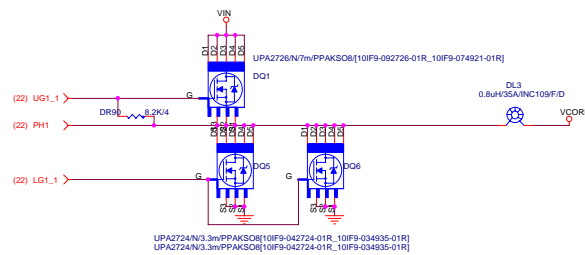
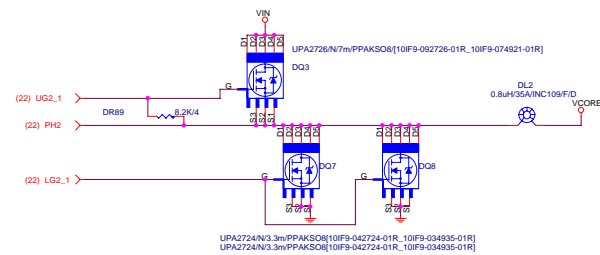
TPM



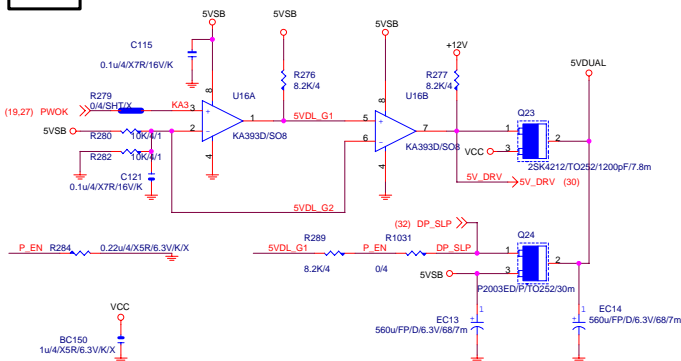
GIGABYTE Technology

Title		BIOS	
Size	Document Number	GA-Q67M-D2H-B3	
Custom		Rev 1.0	
Date:	Friday, April 15, 2011	Sheet	21 of 32

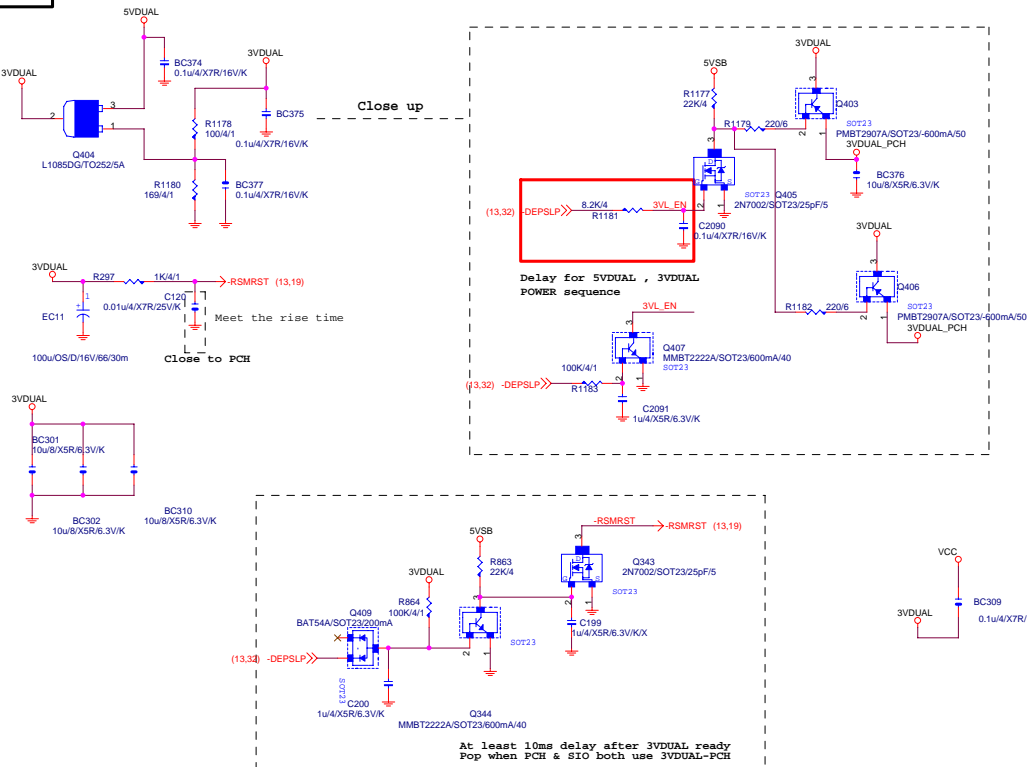




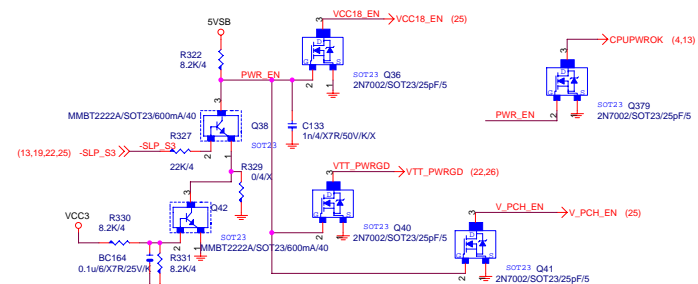
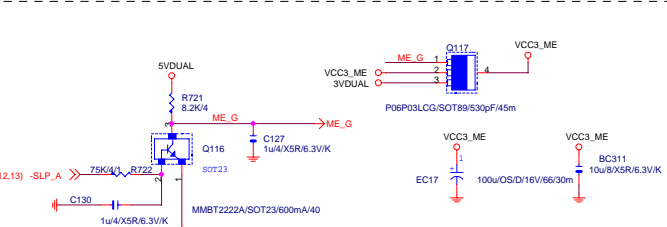
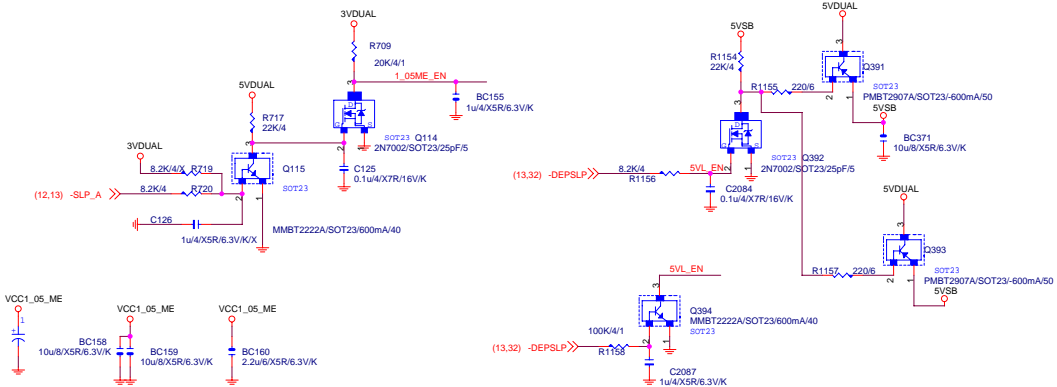
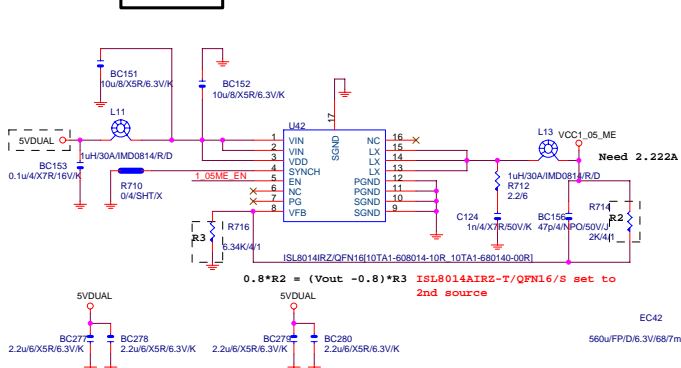
5VDUAL



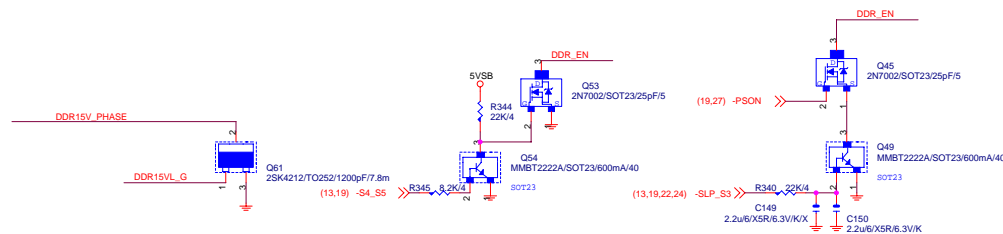
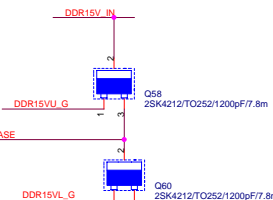
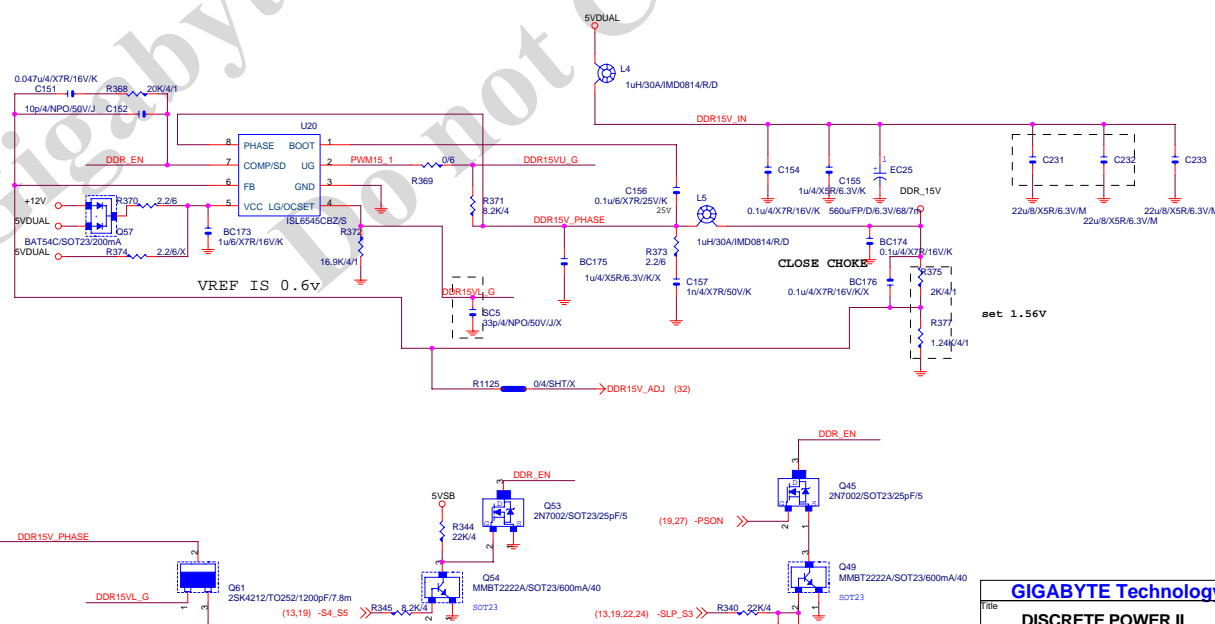
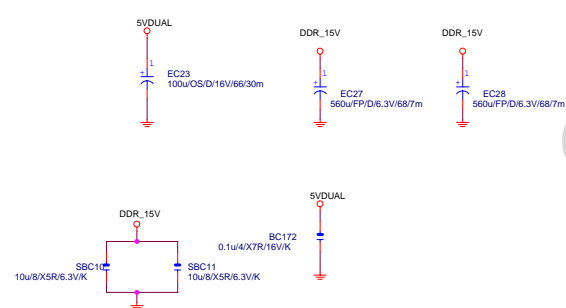
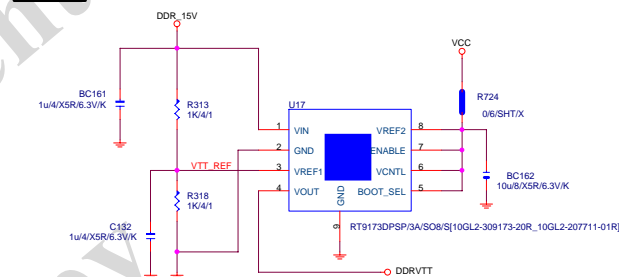
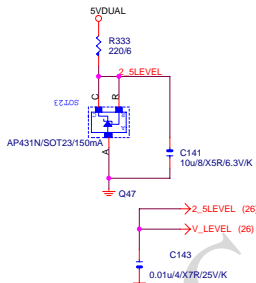
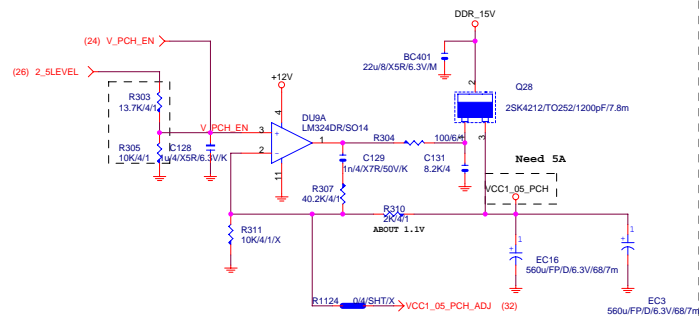
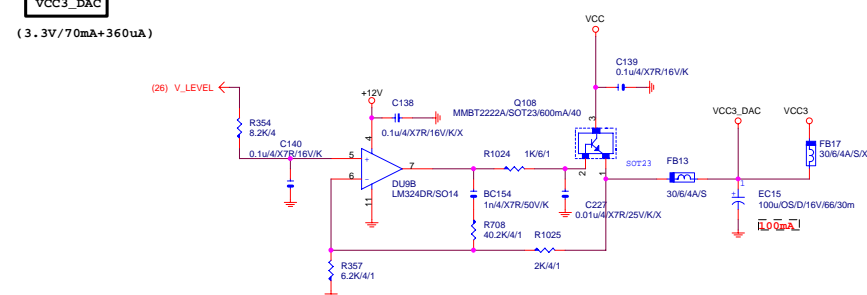
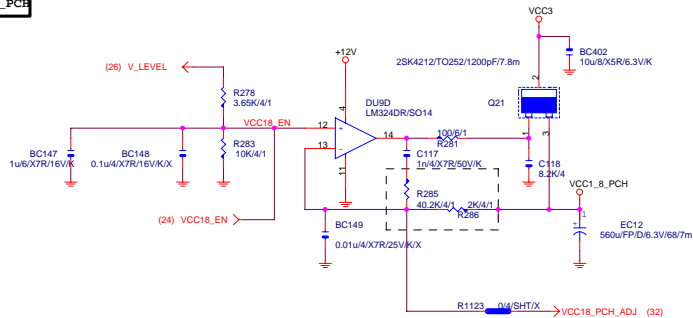
3VDUAL



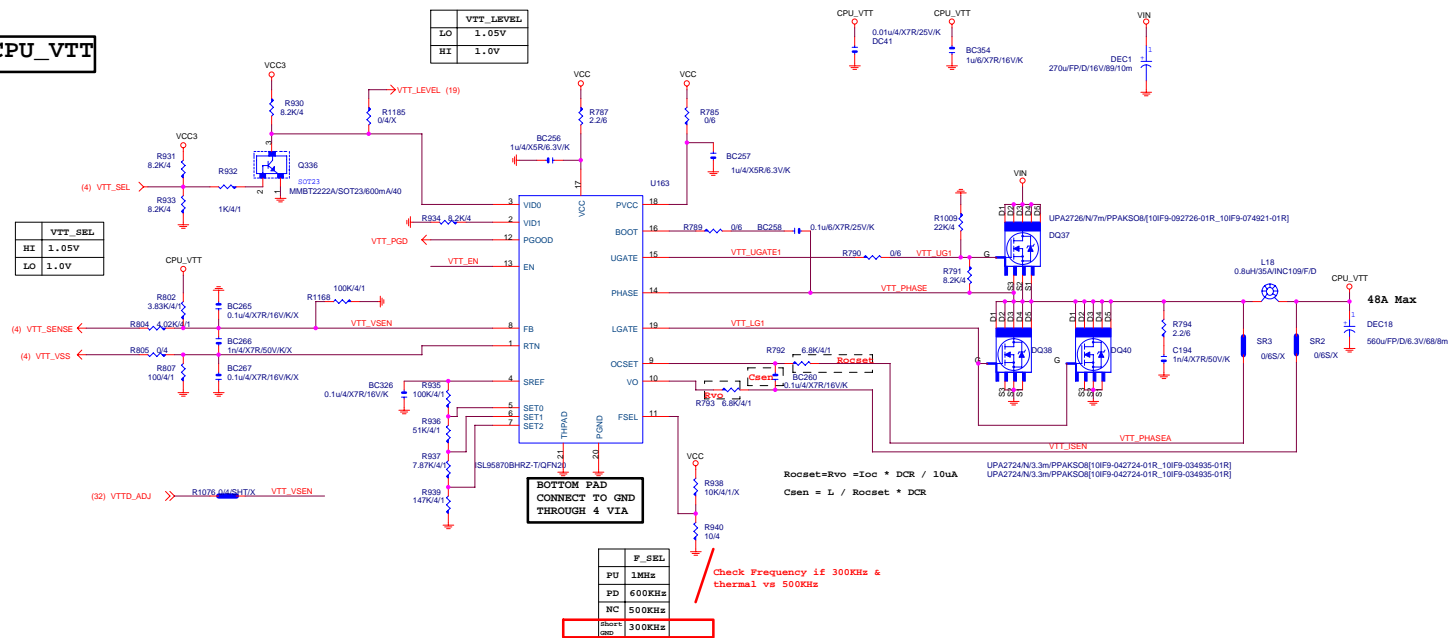
VCC1_05_ME



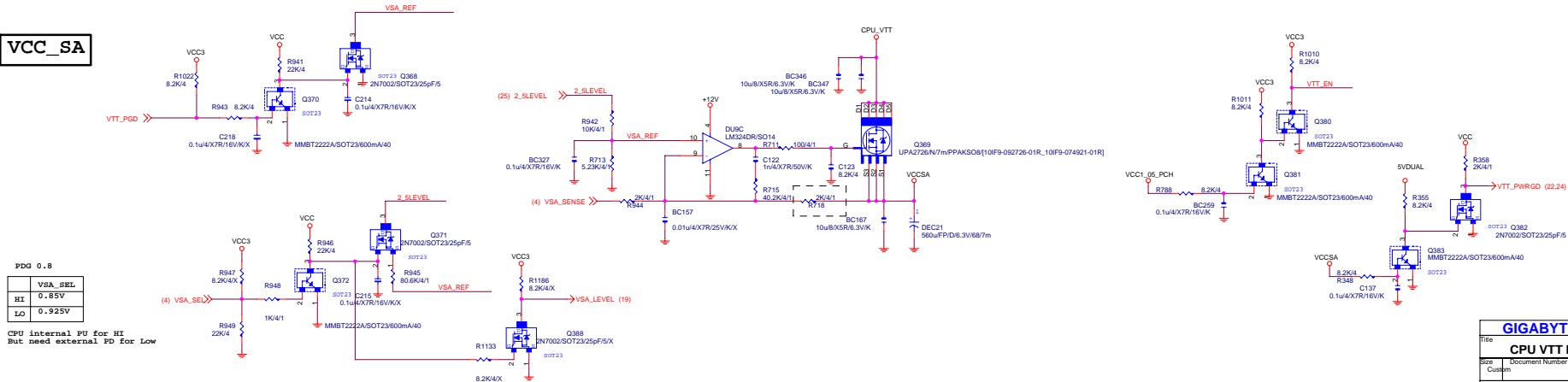
DDR_15V



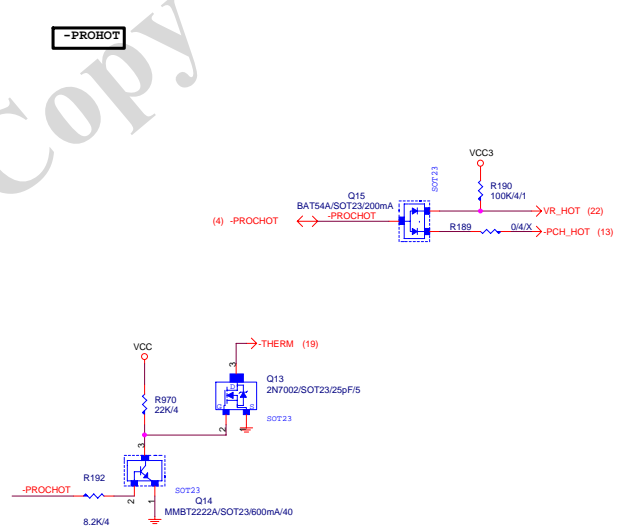
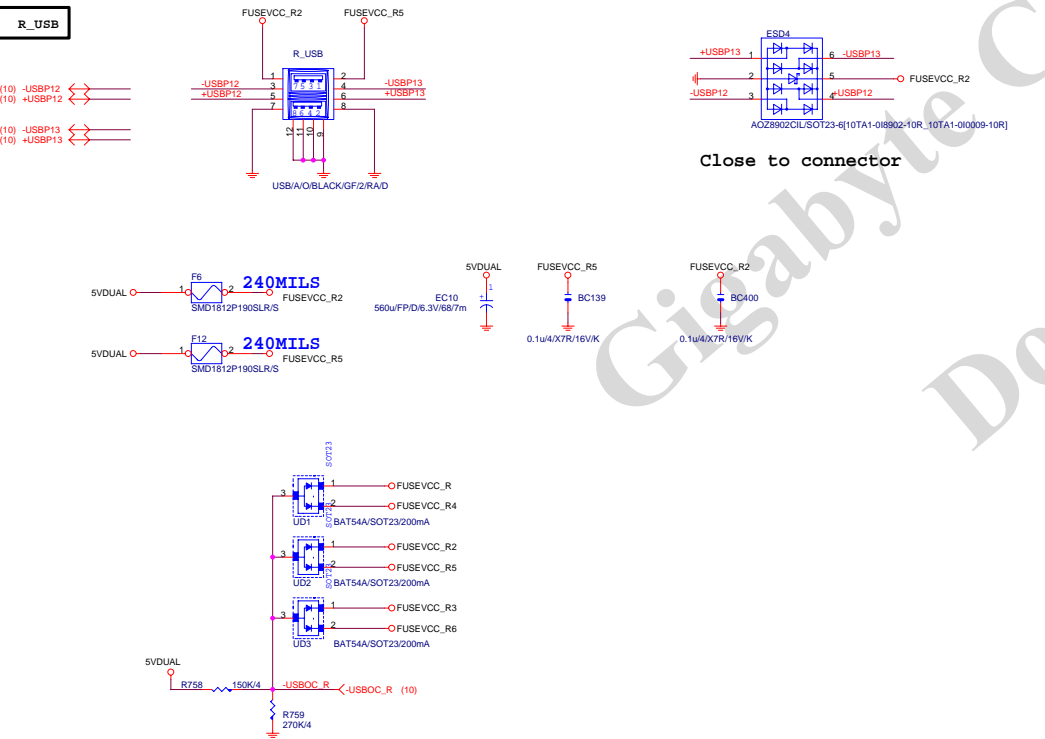
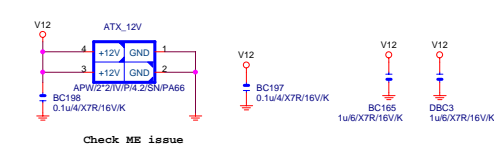
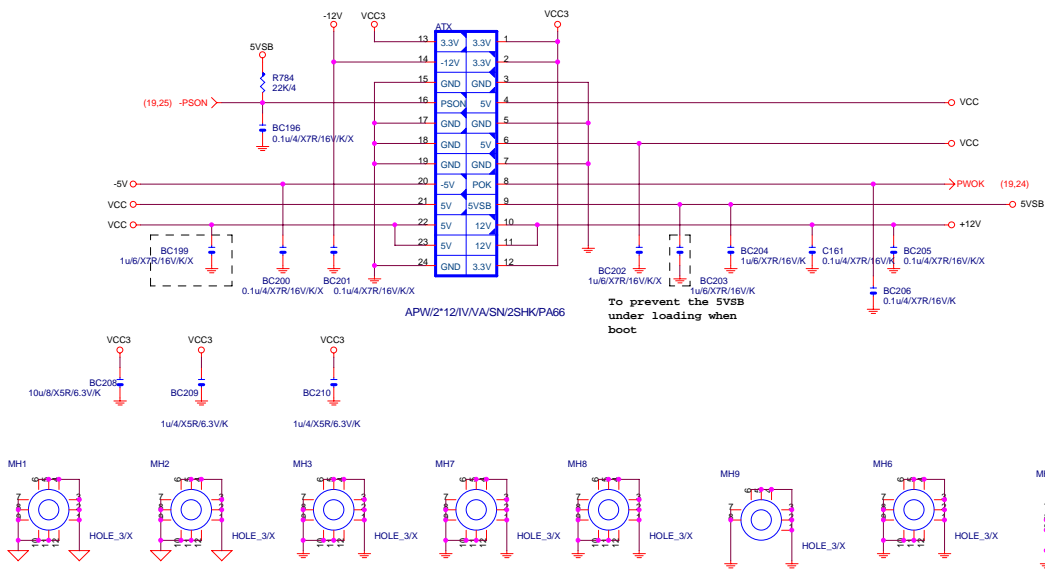
CPU_VTT



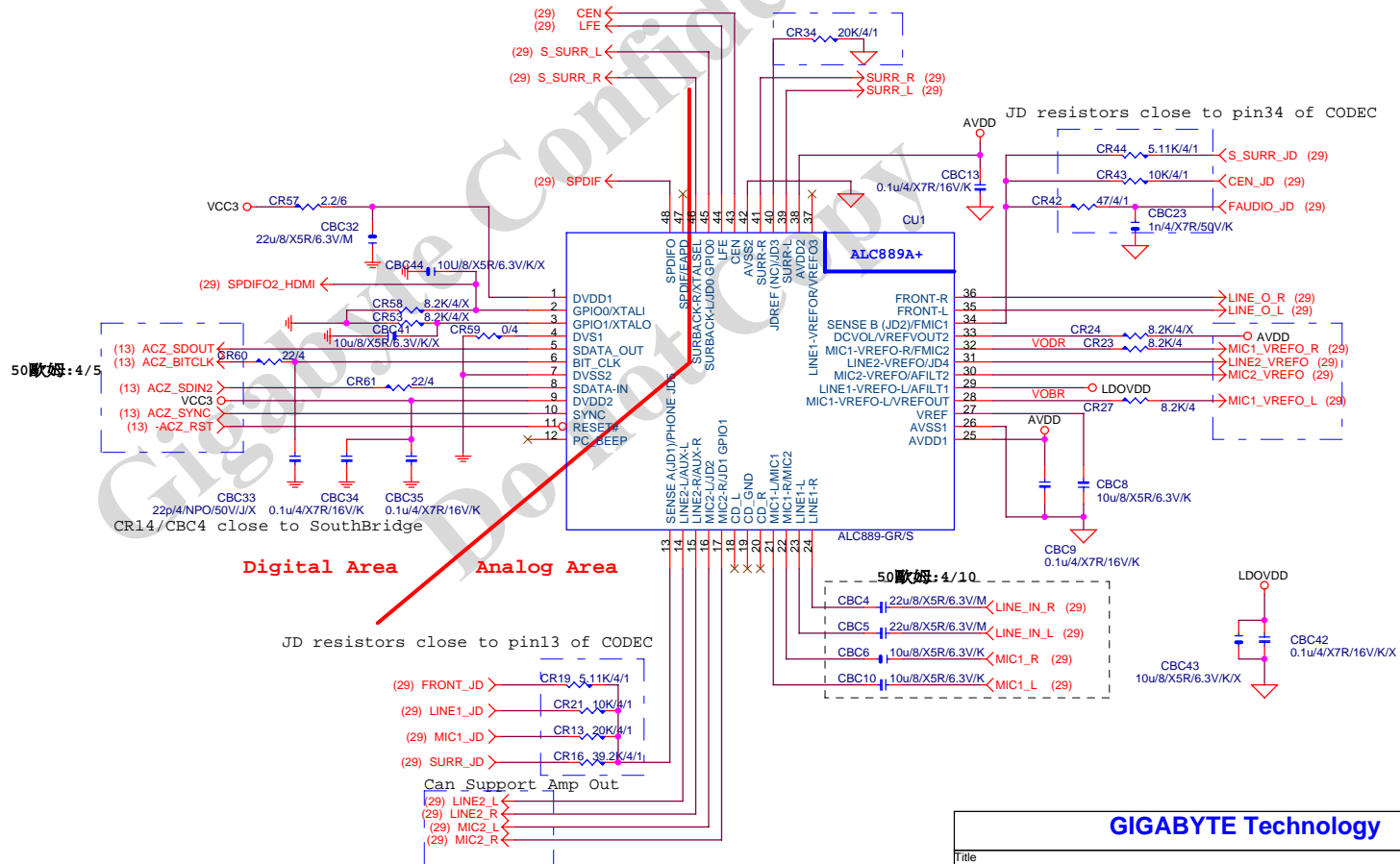
VCC_SA



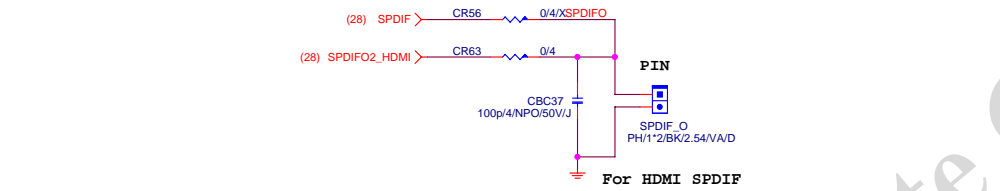
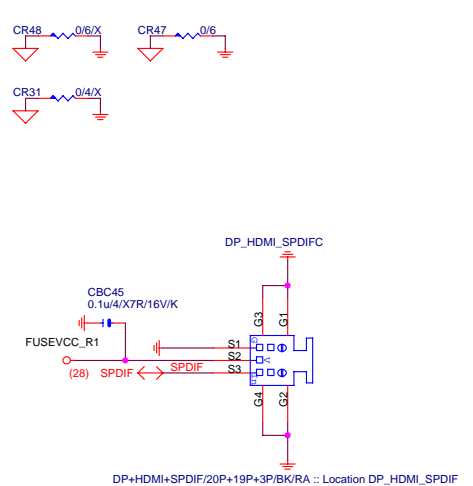
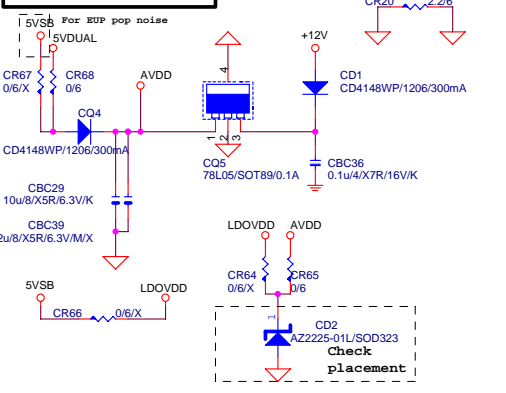
ATX POWER CONNECTOR



	ALC883	ALC888-VA	ALC888B	ALC888-VD	ALC892 ALC887-VD	ALC889	ALC889A	ALC892R
PIN2	X	X	X	X	X	X	CR58=8.2K/4	X
PIN3	X	X	X	CBC41=10U	CBC41=10U	X	CR53=8.2K/4	CBC41=10U
PIN4	CR59=0/4	CR59=0/4	X	X	X	CR59=0/4	CR59=0/4	X
PIN29(For MIC Vref)	X	X	X	X	X	X	X	
* PIN33	CR24=8.2K	X	X	X	X	X	X	X
PIN40	20K/1%	20K/1%	20K/1%	20K/1%	20K/1%	20K/1%	20K/0.1%	20K/1%
SPDIF-SHARE	CR56=0/4	CR56=0/4	CR63=0/4	CR56=0/4	CR63=0/4	CR63=0/4	CR56=0/4	CR63=0/4
Audio input Cap : CBC4/CBC5/CBC6/ CBC10/CBC15/CBC17	4.7uF /X5R	4.7uF /X5R	4.7uF /X5R	4.7uF /X5R	4.7uF /X5R	10uF /X5R	4.7uF /X5R	4.7uF /X5R
Audio I/O resistors : CR32/CR15/CR12/CR17/ CR22/CR26/CR51/CR25/ CR52/CR40/CR3/CR1/ CR9/CR6/CR36/CR38	75 ohm	75 ohm	75 ohm	75 ohm	75 ohm	66 ohm or lower	75 ohm	75 ohm
Embedded LDO: CR64/CR66	X	X	X	Stuff	Stuff	X	X	X
External LDO : CD1/CQ4/CQ5/CR65	Stuff	Stuff	Stuff	X	X	Stuff	Stuff	Stuff

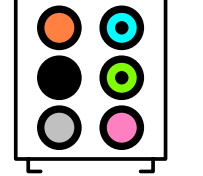


CODEC POWER/EMI PAD

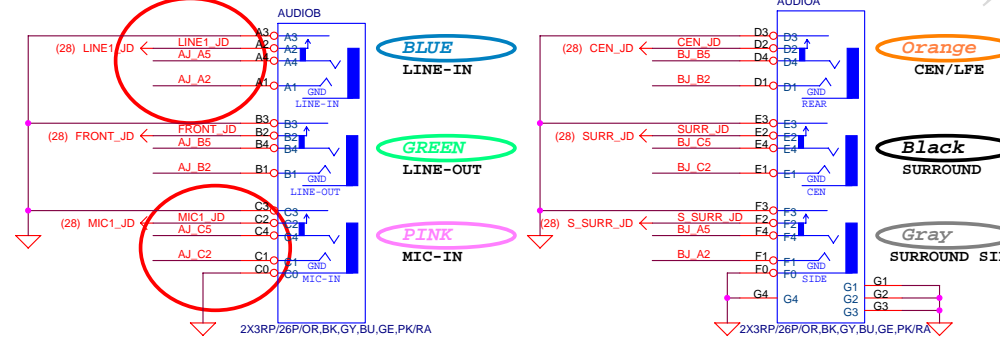


AZALIA JACK

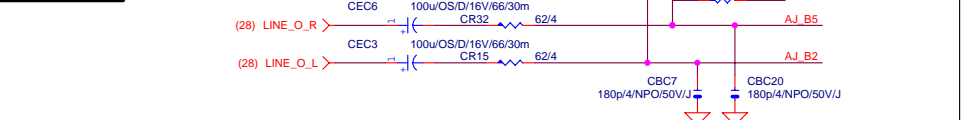
BTX AZALIA CONNECTOR



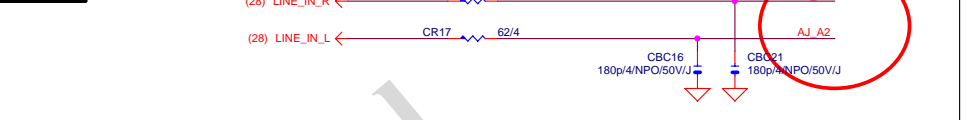
11NR6-403007-21R



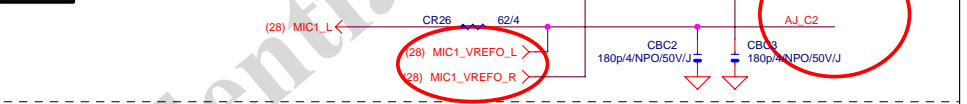
LINE-OUT



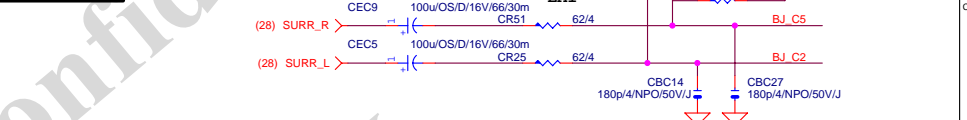
LINE-IN



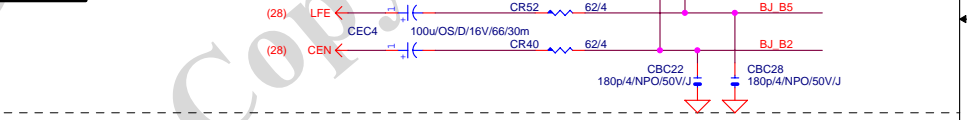
MIC-IN



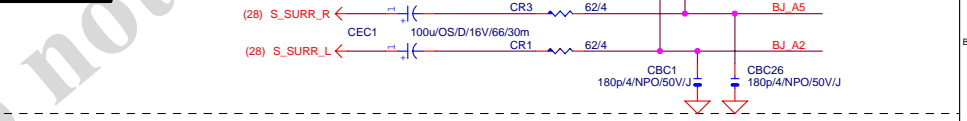
SURROUND



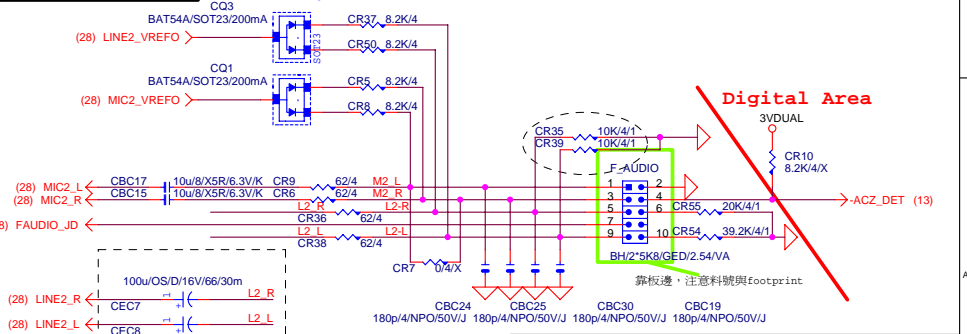
CEN/LFE



SURR BACK

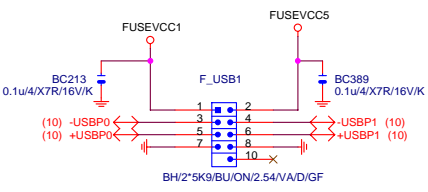


AZALIA FRONT PANEL

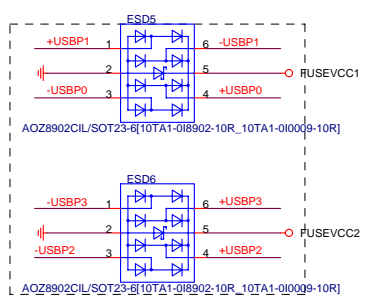


GIGABYTE Technology			
Title			
AUDIO JACK			
Size			
Document Number			
GA-Q67M-D2H-B3			
Date:			
Friday, April 15, 2011			
Sheet			
29 of 32			

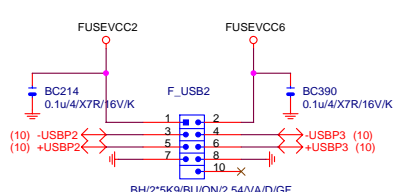
FRONT USB1



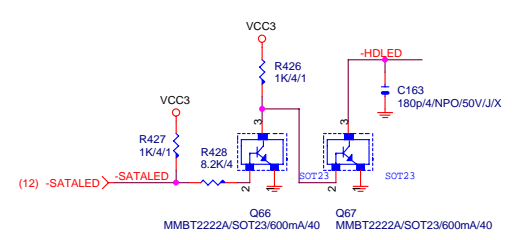
FRONT USB2



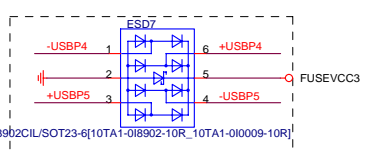
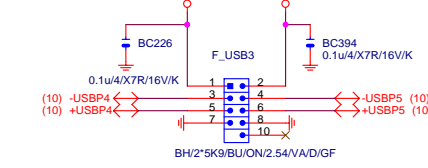
Close to connector



SATA LED

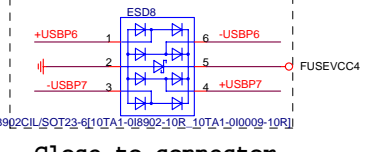
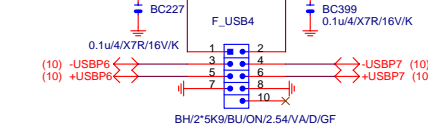


FRONT USB3

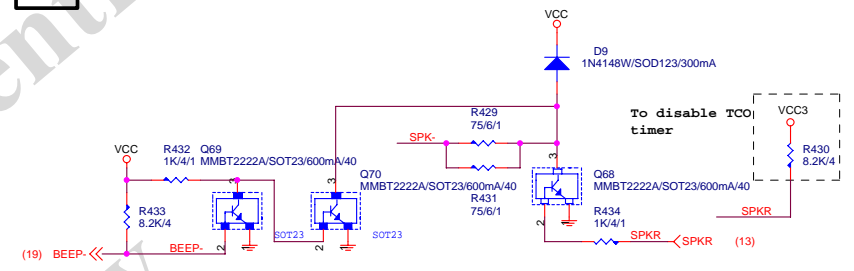


Close to connector

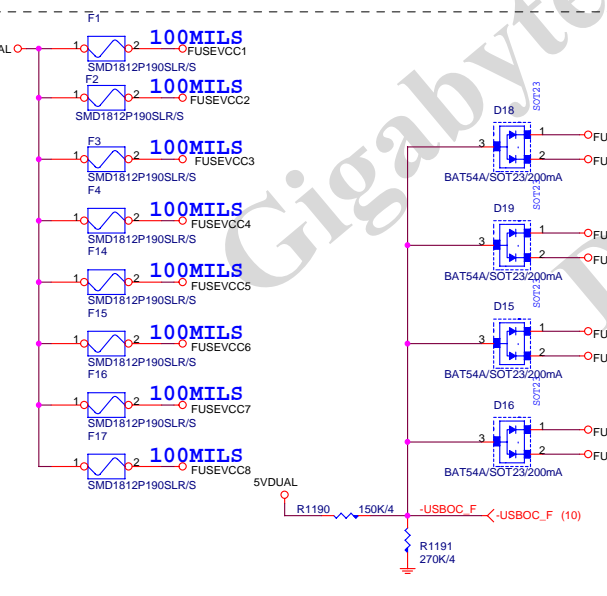
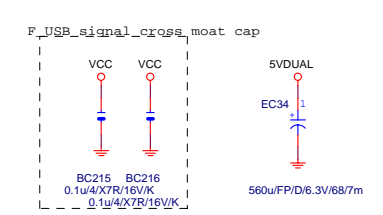
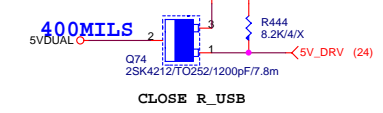
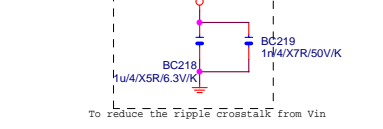
FRONT USB4



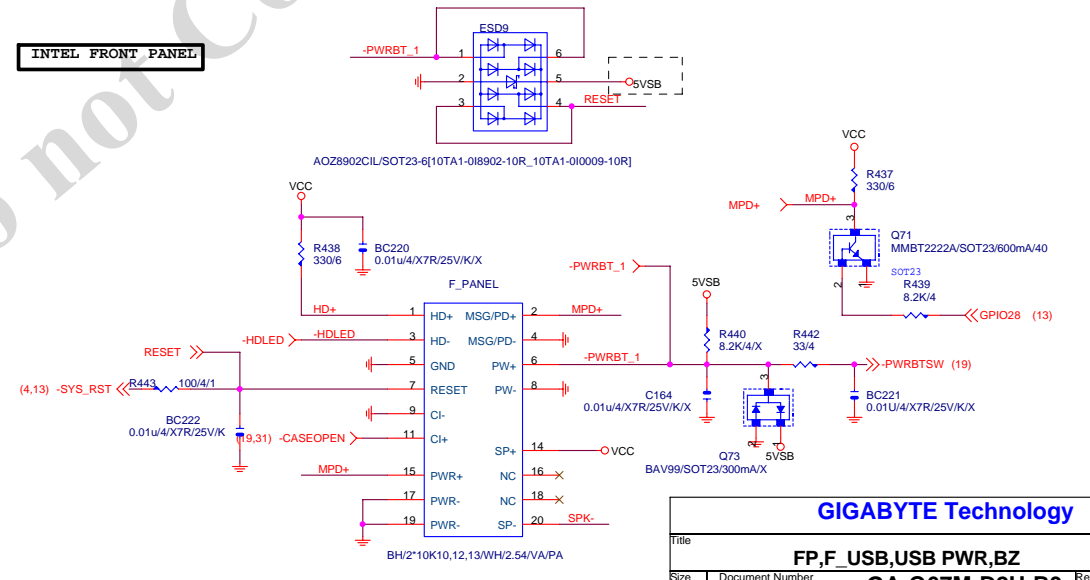
SPKR



F_USB POWER

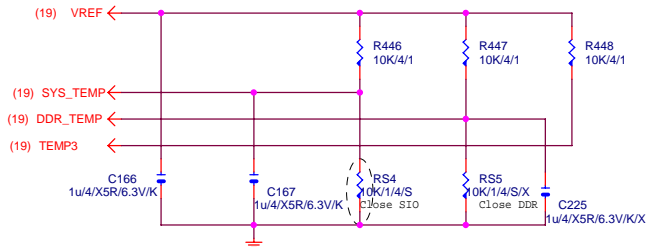


INTEL FRONT PANEL

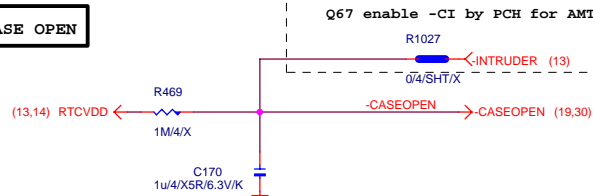


GIGABYTE Technology			
Title			
FP,F_USB,USB PWR,BZ			
Size	Document Number	GA-Q67M-D2H-B3	
Custom		Rev 1.0	
Date:	Friday, April 15, 2011	Sheet	30 of 32

TEMP H/W MONITOR

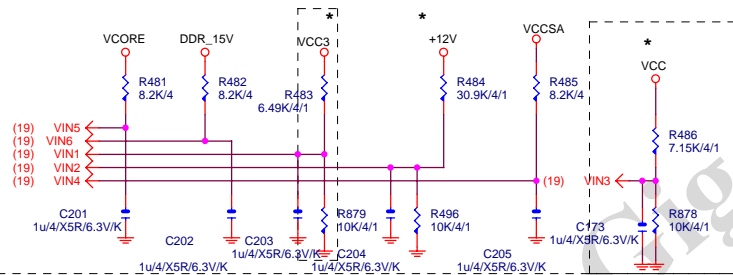


CASE OPEN

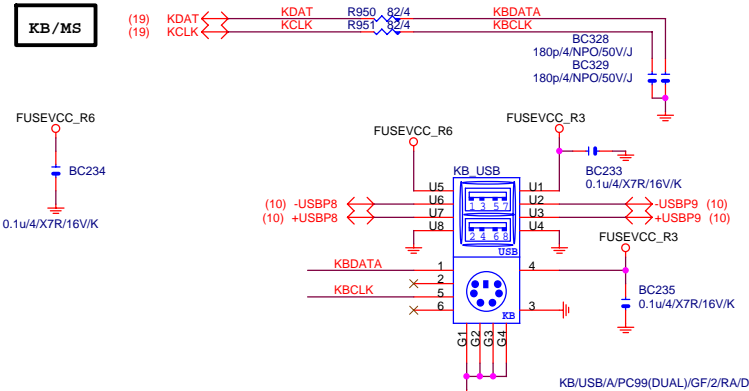


Case Open Circuits

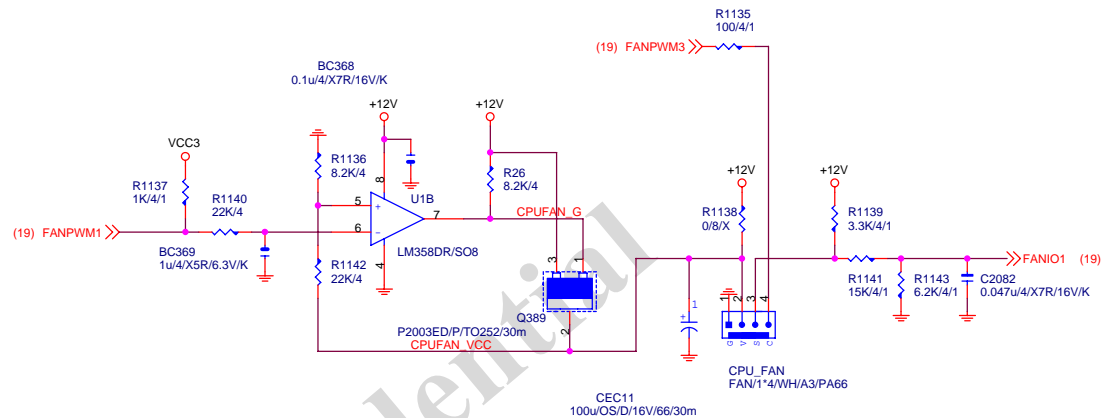
VOLTAGE-- H/W MONITOR



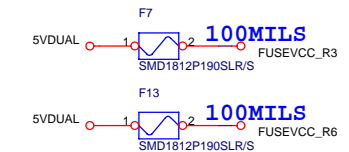
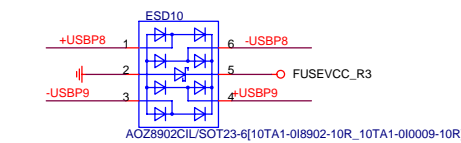
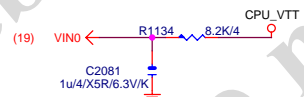
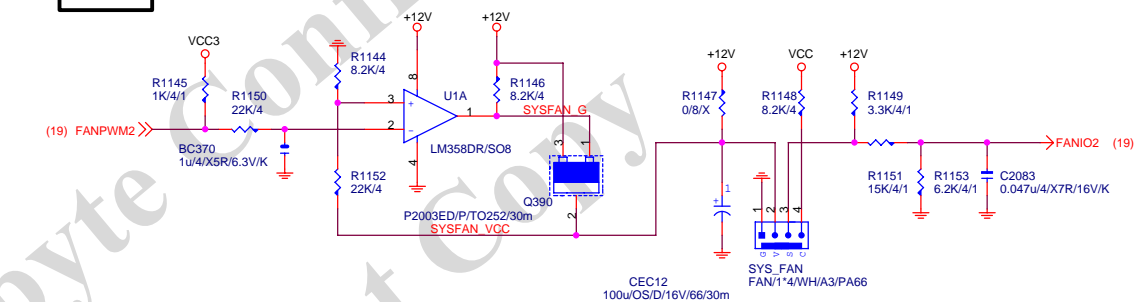
KB/MS



CPU SMART FAN

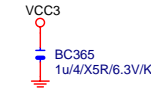
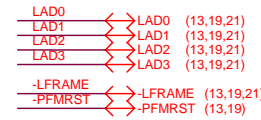
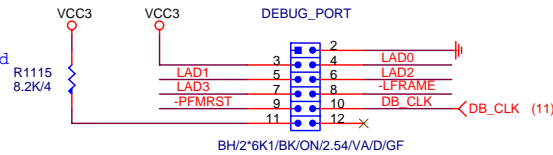


SYS FAN

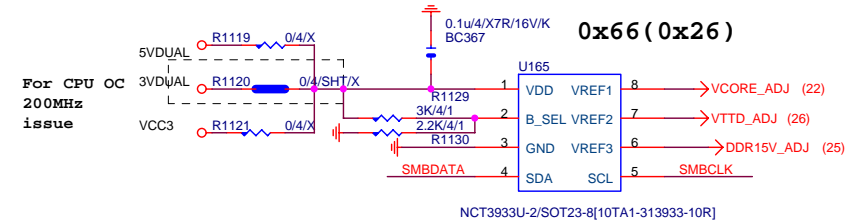
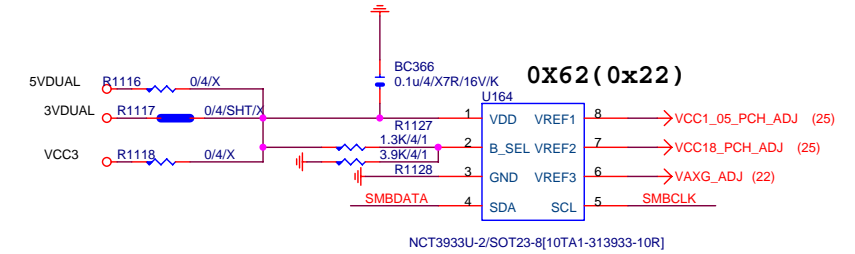
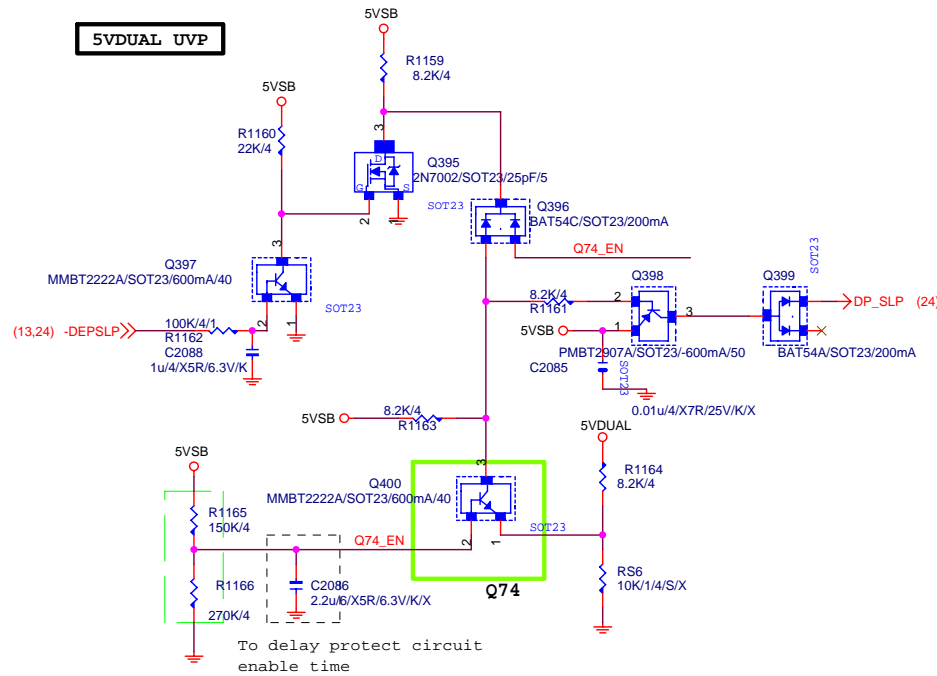


GIGABYTE Technology			
Title			
HWM,KB/MS, FAN CTRL			
Size	Document Number	Rev	
Custom		GA-Q67M-D2H-B3 1.0	
Date:	Friday, April 15, 2011	Sheet	31 of 32

sensor LPC DEBUG card
(always mount)



5VDUAL UVP



For CPU OC
200MHz
issue

GIGABYTE Technology

Title		80 PORT, OV IC	
Size	Document Number	GA-Q67M-D2H-B3	
B		Rev 1.0	
Date:	Friday, April 15, 2011	Sheet	32 of 32